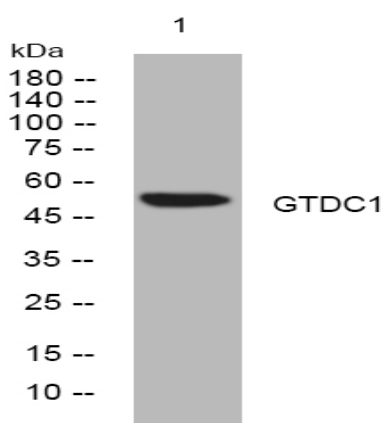


GTDC1 rabbit pAb

Catalog No :	YT7533
Reactivity :	Human;Mouse;Rat
Applications :	WB
Target :	GTDC1
Gene Name :	GTDC1
Protein Name :	GTDC1
Human Gene Id :	79712
Human Swiss Prot No :	Q4AE62
Mouse Gene Id :	227835
Mouse Swiss Prot No :	Q8BW56
Rat Gene Id :	362129
Rat Swiss Prot No :	Q53E76
Immunogen :	Synthesized peptide derived from human GTDC1 AA range: 273-323
Specificity :	This antibody detects endogenous levels of GTDC1 at Human/Mouse/Rat
Formulation :	Liquid in PBS containing 50% glycerol, 0.5% BSA and 0.02% sodium azide.
Source :	Polyclonal, Rabbit,IgG
Dilution :	WB 1:500-2000
Purification :	The antibody was affinity-purified from rabbit antiserum by affinity-chromatography using epitope-specific immunogen.

Concentration :	1 mg/ml
Storage Stability :	-15°C to -25°C/1 year(Do not lower than -25°C)
Molecularweight :	50kD
Function :	similarity:Belongs to the glycosyltransferase 1 family.,tissue specificity:Ubiquitous. Expressed at high levels in the lung, spleen, testis and peripheral blood leukocytes.,
Expression :	Ubiquitous. Expressed at high levels in the lung, brain, spleen, testis, placenta. ovary, pancreas, spleen and peripheral blood leukocytes. Expressed at low level in the colon, small intestine, kidney, skeletal muscle and thymus. Expressed at high level in colon adenocarcinoma.
Sort :	7192
No4 :	1
Host :	Rabbit
Modifications :	Unmodified

Products Images



Western blot analysis of lysates from U2OS cells, primary antibody was diluted at 1:1000, 4° over night