

RMXL1 rabbit pAb

Catalog No :	YT7520
Reactivity :	Human;Mouse;Rat
Applications :	WB;ELISA;IHC
Target :	RMXL1
Gene Name :	RBMXL1
Protein Name :	RMXL1
Human Gene Id :	494115
Human Swiss Prot No :	Q96E39
Mouse Gene Id :	19656
Mouse Swiss Prot No :	Q91VM5
Rat Swiss Prot No :	D4AE41
Immunogen :	Synthesized peptide derived from human RMXL1 AA range: 304-354
Specificity :	This antibody detects endogenous levels of RMXL1 at Human/Mouse/Rat
Formulation :	Liquid in PBS containing 50% glycerol, 0.5% BSA and 0.02% sodium azide.
Source :	Polyclonal, Rabbit,IgG
Dilution :	WB 1:500-2000;IHC 1:50-300; ELISA 2000-20000
Purification :	The antibody was affinity-purified from rabbit antiserum by affinity-chromatography using epitope-specific immunogen.
Concentration :	1 mg/ml

Storage Stability : -15°C to -25°C/1 year(Do not lower than -25°C)

Molecularweight : 43kD

Background : This gene represents a retrogene of RNA binding motif protein, X-linked (RBMX), which is located on chromosome X. While all introns in the coding sequence have been processed out compared to the RBMX locus, the ORF is intact and there is specific evidence for transcription at this location. The preservation of the ORF by purifying selection in all Old World monkeys carrying it suggests that this locus is likely to be functional, possibly during male meiosis when X chromosomal genes are silenced or during haploid stages of spermatogenesis. This gene shares 5' exon structure with the cysteine conjugate-beta lyase 2 locus on chromosome 1, but the coding sequences are non-overlapping. Alternative splicing results in two transcript variants. [provided by RefSeq, Jun 2009],

Subcellular Location : Nucleus .

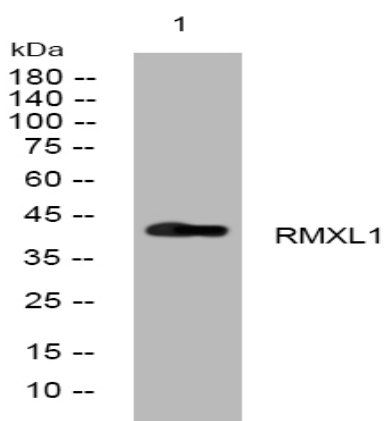
Sort : 14541

No4 : 1

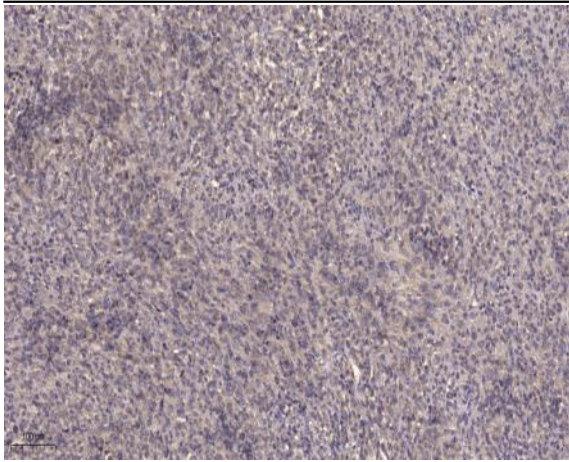
Host : Rabbit

Modifications : Unmodified

Products Images



Western blot analysis of lysates from HpeG2 cells, primary antibody was diluted at 1:1000, 4° over night



Immunohistochemical analysis of paraffin-embedded human Colon cancer. 1, Antibody was diluted at 1:200(4° overnight). 2, Tris-EDTA,pH9.0 was used for antigen retrieval. 3,Secondary antibody was diluted at 1:200(room temperature, 45min).