

DIP2C rabbit pAb

Catalog No :	YT7508
Reactivity :	Human
Applications :	WB
Target :	DIP2C
Gene Name :	DIP2C KIAA0934
Protein Name :	DIP2C
Human Gene Id :	22982
Human Swiss Prot No :	Q9Y2E4
Immunogen :	Synthesized peptide derived from human DIP2C AA range: 719-769
Specificity :	This antibody detects endogenous levels of DIP2C at Human
Formulation :	Liquid in PBS containing 50% glycerol, 0.5% BSA and 0.02% sodium azide.
Source :	Polyclonal, Rabbit,IgG
Dilution :	WB 1[?]500-2000
Purification :	The antibody was affinity-purified from rabbit antiserum by affinity-chromatography using epitope-specific immunogen.
Concentration :	1 mg/ml
Storage Stability :	-15°C to -25°C/1 year(Do not lower than -25°C)
Molecularweight :	171kD
Background :	This gene encodes a member of the disco-interacting protein homolog 2 family. The protein shares strong similarity with a Drosophila protein which interacts with the transcription factor disco and is expressed in the nervous system. [provided

by RefSeq, Oct 2008],

Function : similarity:Belongs to the DIP2 family.,

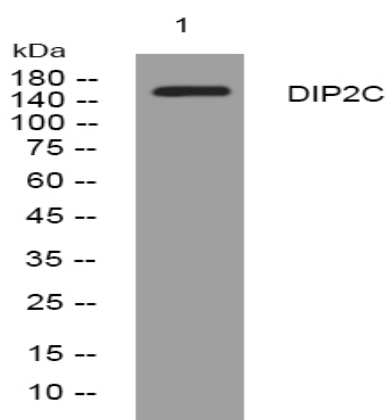
Sort : 5140

No4 : 1

Host : Rabbit

Modifications : Unmodified

Products Images



Western blot analysis of lysates from HpeG2 cells, primary antibody was diluted at 1:1000, 4° over night