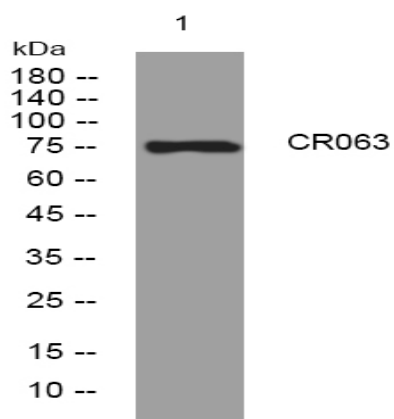


CR063 rabbit pAb

| | |
|------------------------------|---|
| Catalog No : | YT7506 |
| Reactivity : | Human |
| Applications : | WB |
| Target : | CR063 |
| Gene Name : | C18orf63 |
| Protein Name : | CR063 |
| Human Gene Id : | 644041 |
| Human Swiss Prot No : | Q68DL7 |
| Immunogen : | Synthesized peptide derived from human CR063. AA range 21-70 |
| Specificity : | This antibody detects endogenous levels of CR063 at Human |
| Formulation : | Liquid in PBS containing 50% glycerol, 0.5% BSA and 0.02% sodium azide. |
| Source : | Polyclonal, Rabbit,IgG |
| Dilution : | WB 1[?]500-2000 |
| Purification : | The antibody was affinity-purified from rabbit antiserum by affinity-chromatography using epitope-specific immunogen. |
| Concentration : | 1 mg/ml |
| Storage Stability : | -15°C to -25°C/1 year(Do not lower than -25°C) |
| Molecularweight : | 75kD |
| Sort : | 4531 |

| | |
|------------------------|-------------------|
| No4 : | <u>1</u> |
| Host : | <u>Rabbit</u> |
| Modifications : | <u>Unmodified</u> |

Products Images



Western blot analysis of lysates from CACO2 cells, primary antibody was diluted at 1:1000, 4° over night