

PCD17 rabbit pAb

Catalog No :	YT7515
Reactivity :	Human
Applications :	WB;IHC
Target :	PCD17
Gene Name :	PCDH17 PCDH68 PCH68
Protein Name :	PCD17
Human Gene Id :	27253
Human Swiss Prot No :	O14917
Immunogen :	Synthesized peptide derived from human PCD17 AA range: 39-89
Specificity :	This antibody detects endogenous levels of PCD17 at Human
Formulation :	Liquid in PBS containing 50% glycerol, 0.5% BSA and 0.02% sodium azide.
Source :	Polyclonal, Rabbit,IgG
Dilution :	WB 1:500-2000;IHC 1:50-300
Purification :	The antibody was affinity-purified from rabbit antiserum by affinity-chromatography using epitope-specific immunogen.
Concentration :	1 mg/ml
Storage Stability :	-15°C to -25°C/1 year(Do not lower than -25°C)
Molecularweight :	127kD
Background :	This gene belongs to the protocadherin gene family, a subfamily of the cadherin superfamily. The encoded protein contains six extracellular cadherin domains, a transmembrane domain, and a cytoplasmic tail differing from those of the

classical cadherins. The encoded protein may play a role in the establishment and function of specific cell-cell connections in the brain. [provided by RefSeq, Jul 2008],

Function : function:Potential calcium-dependent cell-adhesion protein.,similarity:Contains 6 cadherin domains.,

Subcellular Location : Cell membrane ; Single-pass type I membrane protein .

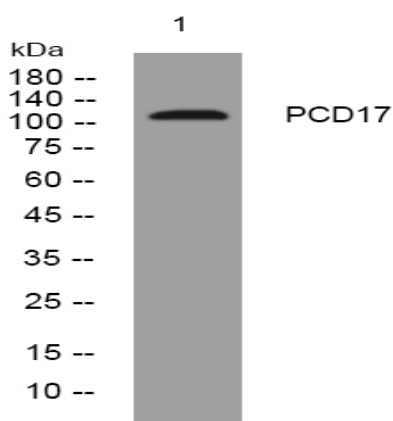
Sort : 11682

No4 : 1

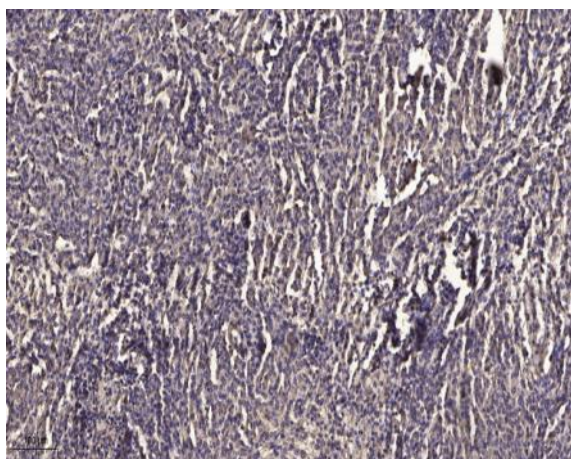
Host : Rabbit

Modifications : Unmodified

Products Images



Western blot analysis of lysates from U2OS cells, primary antibody was diluted at 1:1000, 4° over night



Immunohistochemical analysis of paraffin-embedded human meningioma. 1, Antibody was diluted at 1:200(4° overnight). 2, Tris-EDTA,pH9.0 was used for antigen retrieval. 3,Secondary antibody was diluted at 1:200(room temperature, 45min).