

SAP18 rabbit pAb

Catalog No :	YT7513
Reactivity :	Human;Mouse
Applications :	WB;IHC
Target :	SAP18
Fields :	>>Nucleocytoplasmic transport;>>mRNA surveillance pathway
Gene Name :	SAP18 GIG38
Protein Name :	SAP18
Human Gene Id :	10284
Human Swiss Prot No :	O00422
Mouse Gene Id :	20220
Mouse Swiss Prot No :	O55128
Immunogen :	Synthesized peptide derived from human SAP18
Specificity :	This antibody detects endogenous levels of SAP18 at Human/Mouse
Formulation :	Liquid in PBS containing 50% glycerol, 0.5% BSA and 0.02% sodium azide.
Source :	Polyclonal, Rabbit,IgG
Dilution :	WB 1:500-2000;IHC 1:50-300
Purification :	The antibody was affinity-purified from rabbit antiserum by affinity-chromatography using epitope-specific immunogen.
Concentration :	1 mg/ml

Storage Stability : -15°C to -25°C/1 year(Do not lower than -25°C)

Molecularweight : 17kD

Background : Histone acetylation plays a key role in the regulation of eukaryotic gene expression. Histone acetylation and deacetylation are catalyzed by multisubunit complexes. The protein encoded by this gene is a component of the histone deacetylase complex, which includes SIN3, SAP30, HDAC1, HDAC2, RbAp46, RbAp48, and other polypeptides. This protein directly interacts with SIN3 and enhances SIN3-mediated transcriptional repression when tethered to the promoter. A pseudogene has been identified on chromosome 2. [provided by RefSeq, Dec 2008],

Function : function:Component of the SIN3-repressing complex. Enhances the ability of SIN3-HDAC1-mediated transcriptional repression. When tethered to the promoter, it can direct the formation of a repressive complex to core histone proteins.,similarity:Belongs to the SAP18 family.,subunit:Forms a complex with SIN3A and HDAC1.,tissue specificity:Ubiquitous.,

Subcellular Location : Nucleus . Cytoplasm . Nucleus speckle . Shuttles between the nucleus and the cytoplasm (PubMed:16314458). Colocalizes with ACIN1 and SRSF2 in nuclear speckles (PubMed:20966198). .

Expression : Ubiquitous.

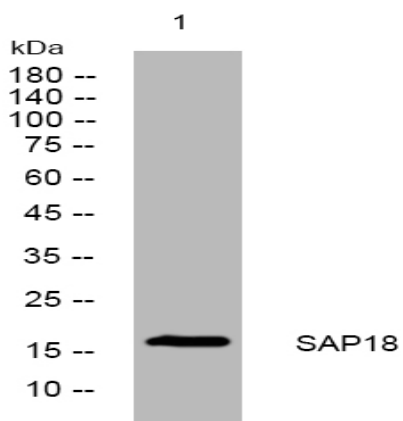
Sort : 14762

No4 : 1

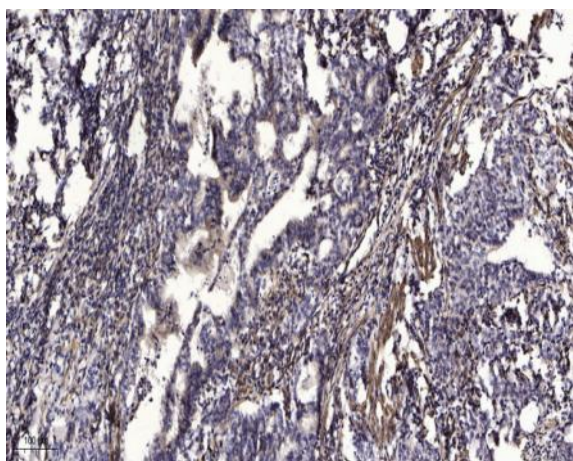
Host : Rabbit

Modifications : Unmodified

Products Images



Western blot analysis of lysates from MCF-7 cells, primary antibody was diluted at 1:1000, 4° over night



Immunohistochemical analysis of paraffin-embedded human Gastric adenocarcinoma. 1, Antibody was diluted at 1:200(4° overnight). 2, Tris-EDTA,pH9.0 was used for antigen retrieval. 3,Secondary antibody was diluted at 1:200(room temperature, 45min).