

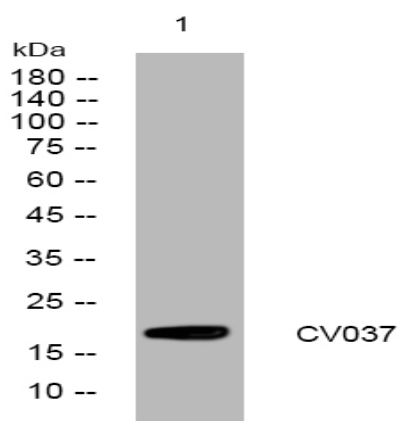
## CV037 rabbit pAb

|                              |   |
|------------------------------|---|
| <b>Catalog No :</b>          | YT7500  |
| <b>Reactivity :</b>          | Human   |
| <b>Applications :</b>        | WB  |
| <b>Target :</b>              | CV037   |
| <b>Gene Name :</b>           | LINC00528 C22orf37  |
| <b>Protein Name :</b>        | CV037   |
| <b>Human Swiss Prot No :</b> | Q8N1L1  |
| <b>Immunogen :</b>           | Synthesized peptide derived from human CV037 AA range: 23-73  |
| <b>Specificity :</b>         | This antibody detects endogenous levels of CV037 at Human   |
| <b>Formulation :</b>         | Liquid in PBS containing 50% glycerol, 0.5% BSA and 0.02% sodium azide.   |
| <b>Source :</b>              | Polyclonal, Rabbit,IgG  |
| <b>Dilution :</b>            | WB 1:500-2000   |
| <b>Purification :</b>        | The antibody was affinity-purified from rabbit antiserum by affinity-chromatography using epitope-specific immunogen. |
| <b>Concentration :</b>       | 1 mg/ml   |
| <b>Storage Stability :</b>   | -15°C to -25°C/1 year(Do not lower than -25°C)  |
| <b>Molecularweight :</b>     | 19kD  |
| <b>Sort :</b>                | 4682  |
| <b>No4 :</b>                 | 1   |

**Host :** Rabbit

**Modifications :** Unmodified

## Products Images



Western blot analysis of lysates from A549 cells, primary antibody was diluted at 1:1000, 4° over night