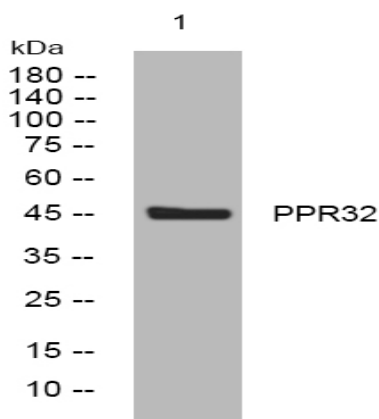


PPR32 rabbit pAb

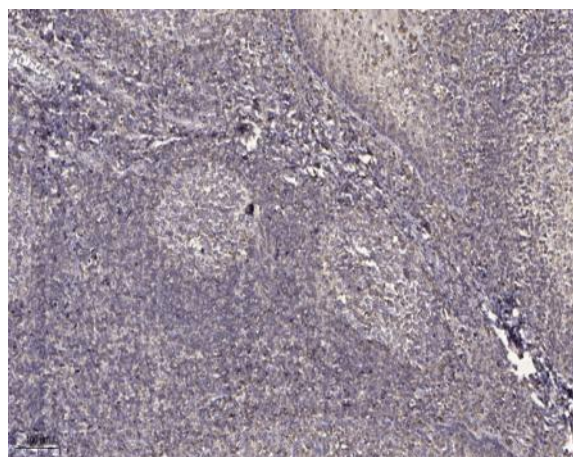
Catalog No :	YT7498
Reactivity :	Human;Mouse;Rat
Applications :	WB;IHC
Target :	PPR32
Gene Name :	PPP1R32 C11orf66
Protein Name :	PPR32
Human Gene Id :	220004
Human Swiss Prot No :	Q7Z5V6
Mouse Gene Id :	67752
Mouse Swiss Prot No :	Q148A4
Rat Gene Id :	252958
Rat Swiss Prot No :	Q66HR9
Immunogen :	Synthesized peptide derived from human PPR32 AA range: 72-122
Specificity :	This antibody detects endogenous levels of PPR32 at Human/Mouse/Rat
Formulation :	Liquid in PBS containing 50% glycerol, 0.5% BSA and 0.02% sodium azide.
Source :	Polyclonal, Rabbit,IgG
Dilution :	WB 1:500-2000;IHC 1:50-300
Purification :	The antibody was affinity-purified from rabbit antiserum by affinity-chromatography using epitope-specific immunogen.

Concentration :	1 mg/ml
Storage Stability :	-15°C to -25°C/1 year(Do not lower than -25°C)
Molecularweight :	47kD
Subcellular Location :	Cell projection, cilium . Cytoplasm . Localized to the cilia of polarized ependymal cells during development and at the adult stage. Preferentially locates between the peripheral microtubules of the axoneme and the ciliary membrane. .
Sort :	12964
No4 :	1
Host :	Rabbit
Modifications :	Unmodified

Products Images



Western blot analysis of lysates from MCF-7 cells, primary antibody was diluted at 1:1000, 4° over night



Immunohistochemical analysis of paraffin-embedded human tonsil. 1, Antibody was diluted at 1:200(4° overnight). 2, Tris-EDTA,pH9.0 was used for antigen retrieval. 3,Secondary antibody was diluted at 1:200(room temperature, 45min).