

ACTY rabbit pAb

| | |
|------------------------------|---|
| Catalog No : | YT7504 |
| Reactivity : | Human;Mouse |
| Applications : | WB |
| Target : | ACTY |
| Fields : | >>Amyotrophic lateral sclerosis;>>Huntington disease;>>Pathways of neurodegeneration - multiple diseases;>>Salmonella infection |
| Gene Name : | ACTR1B CTRN2 |
| Protein Name : | ACTY |
| Human Gene Id : | 10120 |
| Human Swiss Prot No : | P42025 |
| Mouse Gene Id : | 226977 |
| Mouse Swiss Prot No : | Q8R5C5 |
| Immunogen : | Synthesized peptide derived from human ACTY AA range: 29-79 |
| Specificity : | This antibody detects endogenous levels of ACTY at Human/Mouse |
| Formulation : | Liquid in PBS containing 50% glycerol, 0.5% BSA and 0.02% sodium azide. |
| Source : | Polyclonal, Rabbit,IgG |
| Dilution : | WB 1[?]500-2000 |
| Purification : | The antibody was affinity-purified from rabbit antiserum by affinity-chromatography using epitope-specific immunogen. |
| Concentration : | 1 mg/ml |

Storage Stability : -15°C to -25°C/1 year(Do not lower than -25°C)

Molecularweight : 41kD

Background : This gene encodes a 42.3 kD subunit of dynactin, a macromolecular complex consisting of 10 subunits ranging in size from 22 to 150 kD. Dynactin binds to both microtubules and cytoplasmic dynein and is involved in a diverse array of cellular functions, including ER-to-Golgi transport, the centripetal movement of lysosomes and endosomes, spindle formation, chromosome movement, nuclear positioning, and axonogenesis. This subunit, like ACTR1A, is an actin-related protein. These two proteins, which are of equal length and share 90% amino acid identity, are present in a constant ratio of approximately 1:15 in the dynactin complex. [provided by RefSeq, Aug 2008],

Function : function:Component of a multi-subunit complex involved in microtubule based vesicle motility. It is associated with the centrosome.,similarity:Belongs to the actin family.,similarity:Belongs to the actin family. ARP1 subfamily.,

Subcellular Location : Cytoplasm, cytoskeleton. Cytoplasm, cytoskeleton, microtubule organizing center, centrosome.

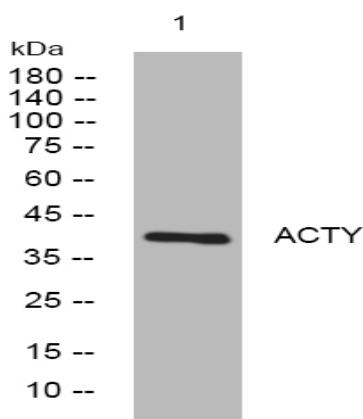
Sort : 1722

No4 : 1

Host : Rabbit

Modifications : Unmodified

Products Images



Western blot analysis of lysates from AD293 cells, primary antibody was diluted at 1:1000, 4° over night