

## LR16A rabbit pAb

<b>Catalog No :</b>	YT7492
<b>Reactivity :</b>	Human;Mouse
<b>Applications :</b>	WB;IHC
<b>Target :</b>	LR16A
<b>Gene Name :</b>	LRRC16A CARMIL LRRC16
<b>Protein Name :</b>	LR16A
<b>Human Gene Id :</b>	55604
<b>Human Swiss Prot No :</b>	Q5VZK9
<b>Mouse Gene Id :</b>	68732
<b>Mouse Swiss Prot No :</b>	Q6EDY6
<b>Immunogen :</b>	Synthesized peptide derived from human LR16A AA range: 853-903
<b>Specificity :</b>	This antibody detects endogenous levels of LR16A at Human/Mouse
<b>Formulation :</b>	Liquid in PBS containing 50% glycerol, 0.5% BSA and 0.02% sodium azide.
<b>Source :</b>	Polyclonal, Rabbit,IgG
<b>Dilution :</b>	WB 1:500-2000;IHC 1:50-300
<b>Purification :</b>	The antibody was affinity-purified from rabbit antiserum by affinity-chromatography using epitope-specific immunogen.
<b>Concentration :</b>	1 mg/ml
<b>Storage Stability :</b>	-15°C to -25°C/1 year(Do not lower than -25°C)

**Molecularweight :** 151kD

**Function :** function: Binds CAPZA2 with high affinity and significantly decreases CAPZA2 affinity for actin barbed ends. Increases the rate of elongation from seeds in the presence of CAPZA2, however, seems unable to nucleate filaments. Rapidly uncaps barbed ends capped by CAPZA2 and enhances barbed-end actin polymerization., similarity: Belongs to the CARMIL family., similarity: Contains 11 LRR (leucine-rich) repeats., subcellular location: Colocalized with F-actin in lamellipodia but not with F-actin in stress fibers., subunit: Interacts via its C-terminus with CAPZA2 in cytoplasm; interaction is essential for lamellipodial protrusion and cell translocation., tissue specificity: Expressed in lung, placenta, small intestine, liver, thymus, colon, skeletal muscle, heart and brain. Higher expression in kidney.,

**Subcellular Location :** Cytoplasm . Cytoplasm, cytoskeleton . Cell membrane . Cell projection, lamellipodium . Found on macropinosomes (PubMed:19846667). Colocalized with heterodimeric capping protein (CP) and F-actin in lamellipodia but not with F-actin in stress fibers (PubMed:19846667). .

**Expression :** Expressed in lung, placenta, small intestine, liver, thymus, colon, skeletal muscle, heart and brain. Higher expression in kidney.

**Sort :** 9236

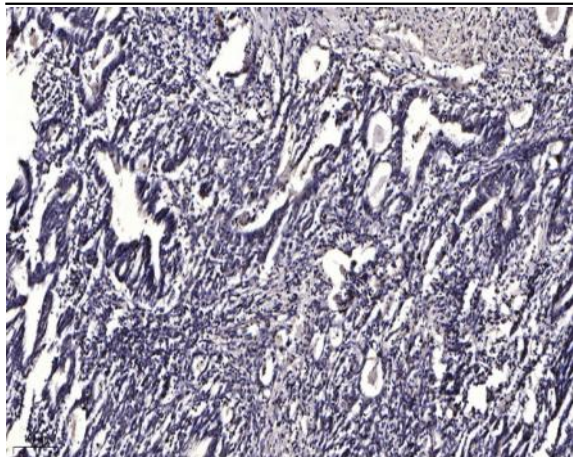
**No4 :** 1

**Host :** Rabbit

**Modifications :** Unmodified

## Products Images





Immunohistochemical analysis of paraffin-embedded human Gastric adenocarcinoma. 1, Antibody was diluted at 1:200(4° overnight). 2, Tris-EDTA,pH9.0 was used for antigen retrieval. 3,Secondary antibody was diluted at 1:200(room temperature, 45min).