

FBXW2 rabbit pAb

Catalog No :	YT7491
Reactivity :	Human;Mouse;Rat
Applications :	WB
Target :	FBXW2
Gene Name :	FBXW2 FBW2 FWD2
Protein Name :	FBXW2
Human Gene Id :	26190
Human Swiss Prot No :	Q9UKT8
Mouse Swiss Prot No :	Q60584
Rat Gene Id :	311881
Rat Swiss Prot No :	B2RZ17
Immunogen :	Synthesized peptide derived from human FBXW2 AA range: 155-205
Specificity :	This antibody detects endogenous levels of FBXW2 at Human/Mouse/Rat
Formulation :	Liquid in PBS containing 50% glycerol, 0.5% BSA and 0.02% sodium azide.
Source :	Polyclonal, Rabbit,IgG
Dilution :	WB 1:500-2000
Purification :	The antibody was affinity-purified from rabbit antiserum by affinity-chromatography using epitope-specific immunogen.
Concentration :	1 mg/ml

Storage Stability : -15°C to -25°C/1 year(Do not lower than -25°C)

Molecularweight : 50kD

Background : F-box proteins are an expanding family of eukaryotic proteins characterized by an approximately 40 amino acid motif, the F box. Some F-box proteins have been shown to be critical for the ubiquitin-mediated degradation of cellular regulatory proteins. In fact, F-box proteins are one of the four subunits of ubiquitin protein ligases, called SCFs. SCF ligases bring ubiquitin conjugating enzymes to substrates that are specifically recruited by the different F-box proteins. Mammalian F-box proteins are classified into three groups based on the presence of either WD-40 repeats, leucine-rich repeats, or the presence or absence of other protein-protein interacting domains. This gene encodes the second identified member of the F-box gene family and contains multiple WD-40 repeats. [provided by RefSeq, Jul 2008],

Function : function:Substrate-recognition component of the SCF (SKP1-CUL1-F-box protein)-type E3 ubiquitin ligase complex.,similarity:Contains 1 F-box domain.,similarity:Contains 4 WD repeats.,subunit:Directly interacts with SKP1A and CUL1.,

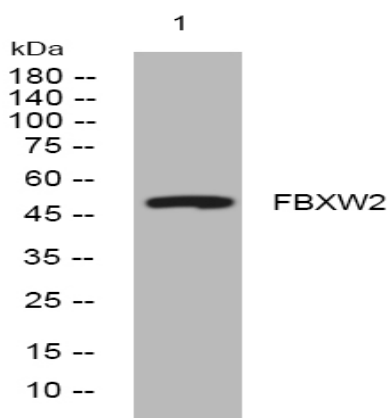
Sort : 5985

No4 : 1

Host : Rabbit

Modifications : Unmodified

Products Images



Western blot analysis of lysates from HCT116 cells, primary antibody was diluted at 1:1000, 4° over night