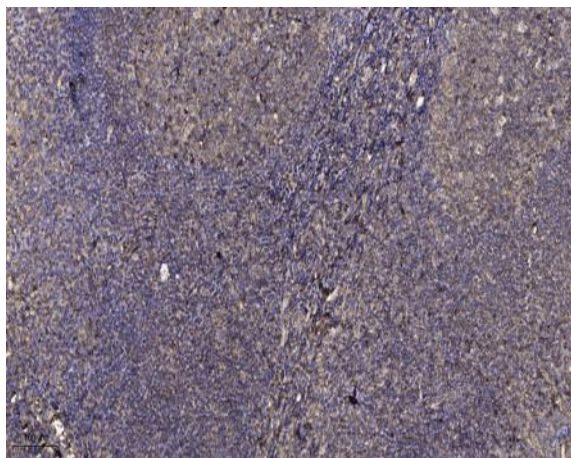


IGS10 rabbit pAb

Catalog No :	YT7488
Reactivity :	Human;Mouse;Rat
Applications :	IHC;IF
Target :	IGS10
Gene Name :	IGSF10 CMF608
Protein Name :	IGS10
Human Gene Id :	285313
Human Swiss Prot No :	Q6WRI0
Mouse Gene Id :	242050
Mouse Swiss Prot No :	Q3V1M1
Rat Gene Id :	310448
Rat Swiss Prot No :	Q6WRH9
Immunogen :	Synthesized peptide derived from human IGS10 AA range: 1790-1840
Specificity :	This antibody detects endogenous levels of IGS10 at Human/Mouse/Rat
Formulation :	Liquid in PBS containing 50% glycerol, 0.5% BSA and 0.02% sodium azide.
Source :	Polyclonal, Rabbit,IgG
Dilution :	IHC 1:50-200. IF 1:50-200
Purification :	The antibody was affinity-purified from rabbit antiserum by affinity-chromatography using epitope-specific immunogen.

Concentration :	1 mg/ml
Storage Stability :	-15°C to -25°C/1 year(Do not lower than -25°C)
Molecularweight :	289kD
Function :	function:May be involved in the maintenance of osteochondroprogenitor cells pool.,similarity:Contains 1 LRRNT domain.,similarity:Contains 12 Ig-like C2-type (immunoglobulin-like) domains.,similarity:Contains 13 LRR (leucine-rich) repeats.,
Subcellular Location :	Secreted .
Sort :	8376
No4 :	1
Host :	Rabbit
Modifications :	Unmodified

Products Images



Immunohistochemical analysis of paraffin-embedded human tonsil. 1, Antibody was diluted at 1:200(4° overnight). 2, Tris-EDTA,pH9.0 was used for antigen retrieval. 3,Secondary antibody was diluted at 1:200(room temperature, 30min).