

ERLN1 rabbit pAb

Catalog No :	YT7470
Reactivity :	Human;Mouse
Applications :	WB
Target :	ERLN1
Gene Name :	ERLIN1 C10orf69 KE04 KEO4 SPFH1
Protein Name :	ERLN1
Human Gene Id :	10613
Human Swiss Prot No :	O75477
Mouse Gene Id :	226144
Mouse Swiss Prot No :	Q91X78
Immunogen :	Synthesized peptide derived from human ERLN1 AA range: 185-235
Specificity :	This antibody detects endogenous levels of ERLN1 at Human/Mouse
Formulation :	Liquid in PBS containing 50% glycerol, 0.5% BSA and 0.02% sodium azide.
Source :	Polyclonal, Rabbit,IgG
Dilution :	WB 1:500-2000
Purification :	The antibody was affinity-purified from rabbit antiserum by affinity-chromatography using epitope-specific immunogen.
Concentration :	1 mg/ml
Storage Stability :	-15°C to -25°C/1 year(Do not lower than -25°C)

Molecularweight : 38kD

Function : similarity:Belongs to the band 7/mec-2 family.,subcellular location:Associated with lipid raft-like domains of the endoplasmic reticulum membrane.,tissue specificity:Expressed in heart, placenta, liver, kidney, pancreas, prostate, testis, ovary and small intestin.,

Subcellular Location : Endoplasmic reticulum membrane ; Single-pass type II membrane protein . Associated with lipid raft-like domains of the endoplasmic reticulum membrane.

Expression : Expressed in heart, placenta, liver, kidney, pancreas, prostate, testis, ovary and small intestine.

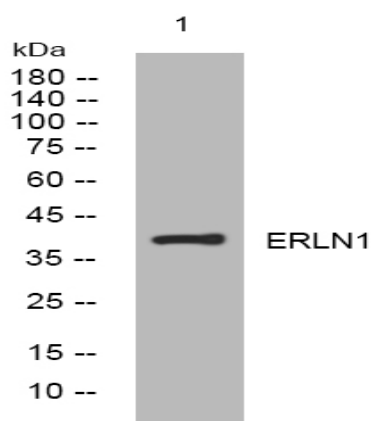
Sort : 5735

No4 : 1

Host : Rabbit

Modifications : Unmodified

Products Images



Western blot analysis of lysates from U2OS cells, primary antibody was diluted at 1:1000, 4° over night