

FBX18 rabbit pAb

Catalog No :	YT7479
Reactivity :	Human;Mouse
Applications :	WB
Target :	FBX18
Gene Name :	FBXO18 FBH1 FBX18
Protein Name :	FBX18
Human Gene Id :	84893
Human Swiss Prot No :	Q8NFZ0
Mouse Gene Id :	50755
Mouse Swiss Prot No :	Q8K2I9
Immunogen :	Synthesized peptide derived from human FBX18 AA range: 799-849
Specificity :	This antibody detects endogenous levels of FBX18 at Human/Mouse
Formulation :	Liquid in PBS containing 50% glycerol, 0.5% BSA and 0.02% sodium azide.
Source :	Polyclonal, Rabbit,IgG
Dilution :	WB 1:500-2000
Purification :	The antibody was affinity-purified from rabbit antiserum by affinity-chromatography using epitope-specific immunogen.
Concentration :	1 mg/ml
Storage Stability :	-15°C to -25°C/1 year(Do not lower than -25°C)

Molecularweight : 115kD

Background : This gene encodes a member of the F-box protein family, members of which are characterized by an approximately 40 amino acid motif, the F-box. The F-box proteins constitute one of the four subunits of ubiquitin protein ligase complex called SCFs (SKP1-cullin-F-box), which function in phosphorylation-dependent ubiquitination. The F-box proteins are divided into three classes: Fbws containing WD-40 domains, Fbls containing leucine-rich repeats, and Fbxs containing either different protein-protein interaction modules or no recognizable motifs. The protein encoded by this gene belongs to the Fbx class. It contains an F-box motif and seven conserved helicase motifs, and has both DNA-dependent ATPase and DNA unwinding activities. Alternatively spliced transcript variants encoding distinct isoforms have been identified for this gene. [provided by RefSeq, Jul 2008],

Function : function:DNA-dependent ATPase. Unwinds double-stranded DNA in a 3' to 5' direction.,function:Probably recognizes and binds to some phosphorylated proteins and promotes their ubiquitination and degradation.,similarity:Belongs to the helicase family. UvrD subfamily.,similarity:Contains 1 F-box domain.,subunit:Part of a SCF E3 ubiquitin ligase complex consisting of SKP1, CUL1, RBX1 and FBXO18. Interacts with SKP1.,

Subcellular Location : Nucleus . Chromosome . Accumulates at sites of DNA damage or replication stress (PubMed:19736316, PubMed:23677613). PCNA is required for localization to DNA damage sites (PubMed:23677613). Localizes to the nucleoplasm in absence of DNA damage (PubMed:23677613). .

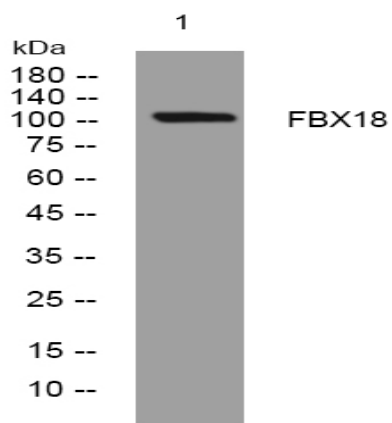
Sort : 5978

No4 : 1

Host : Rabbit

Modifications : Unmodified

Products Images



Western blot analysis of lysates from HuvEc cells, primary antibody was diluted at 1:1000, 4° over night