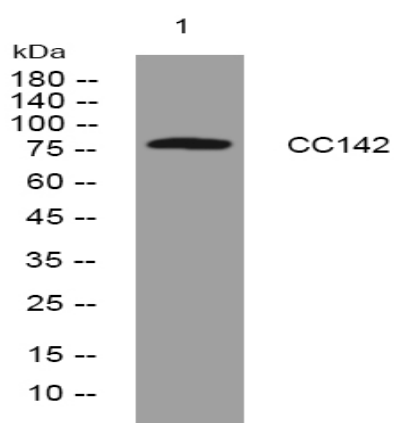


CC142 rabbit pAb

Catalog No :	YT7478
Reactivity :	Human;Mouse
Applications :	WB
Target :	CC142
Gene Name :	CCDC142 PSEC0243
Protein Name :	CC142
Human Gene Id :	84865
Human Swiss Prot No :	Q17RM4
Mouse Gene Id :	243510
Mouse Swiss Prot No :	Q8CAI1
Immunogen :	Synthesized peptide derived from human CC142 AA range: 227-277
Specificity :	This antibody detects endogenous levels of CC142 at Human/Mouse
Formulation :	Liquid in PBS containing 50% glycerol, 0.5% BSA and 0.02% sodium azide.
Source :	Polyclonal, Rabbit,IgG
Dilution :	WB 1:500-2000
Purification :	The antibody was affinity-purified from rabbit antiserum by affinity-chromatography using epitope-specific immunogen.
Concentration :	1 mg/ml
Storage Stability :	-15°C to -25°C/1 year(Do not lower than -25°C)

Molecularweight :	83kD
Sort :	3298
No4 :	1
Host :	Rabbit
Modifications :	Unmodified

Products Images



Western blot analysis of lysates from VEC cells, primary antibody was diluted at 1:1000, 4° over night