

IDI1 rabbit pAb

Catalog No :	YT7476
Reactivity :	Human;Mouse;Rat
Applications :	WB
Target :	IDI1
Fields :	>>Terpenoid backbone biosynthesis;>>Metabolic pathways
Gene Name :	IDI1
Protein Name :	IDI1
Human Gene Id :	3422
Human Swiss Prot No :	Q13907
Mouse Gene Id :	319554
Mouse Swiss Prot No :	P58044
Rat Gene Id :	89784
Rat Swiss Prot No :	O35760
Immunogen :	Synthesized peptide derived from human IDI1 AA range: 103-153
Specificity :	This antibody detects endogenous levels of IDI1 at Human/Mouse/Rat
Formulation :	Liquid in PBS containing 50% glycerol, 0.5% BSA and 0.02% sodium azide.
Source :	Polyclonal, Rabbit,IgG
Dilution :	WB 1[?]500-2000
Purification :	The antibody was affinity-purified from rabbit antiserum by affinity-

chromatography using epitope-specific immunogen.

Concentration : 1 mg/ml

Storage Stability : -15°C to -25°C/1 year(Do not lower than -25°C)

Molecularweight : 25kD

Background : IDI1 encodes a peroxisomally-localized enzyme that catalyzes the interconversion of isopentenyl diphosphate (IPP) to its highly electrophilic isomer, dimethylallyl diphosphate (DMAPP), which are the substrates for the successive reaction that results in the synthesis of farnesyl diphosphate and, ultimately, cholesterol. It has been shown in peroxisomal deficiency diseases such as Zellweger syndrome and neonatal adrenoleukodystrophy that there is reduction in IPP isomerase activity. [provided by RefSeq, Jul 2008],

Function : catalytic activity:Isopentenyl diphosphate = dimethylallyl diphosphate.,cofactor:Binds 1 magnesium ion per subunit.,function:Catalyzes the 1,3-allylic rearrangement of the homoallylic substrate isopentenyl (IPP) to its highly electrophilic allylic isomer, dimethylallyl diphosphate (DMAPP).,pathway:Isoprenoid biosynthesis; dimethylallyl-PP biosynthesis; dimethylallyl-PP from isopentenyl-PP: step 1/1.,similarity:Belongs to the IPP isomerase type 1 family.,subunit:Monomer.,

Subcellular Location : Peroxisome .

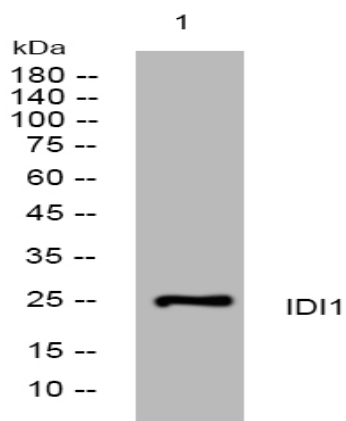
Sort : 8309

No4 : 1

Host : Rabbit

Modifications : Unmodified

Products Images



Western blot analysis of lysates from MDA-MB cells, primary antibody was diluted at 1:1000, 4° over night