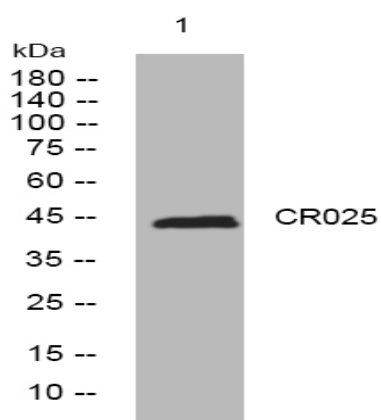


CR025 rabbit pAb

Catalog No :	YT7469
Reactivity :	Human;Mouse
Applications :	WB
Target :	CR025
Gene Name :	C18orf25
Protein Name :	CR025
Human Gene Id :	147339
Human Swiss Prot No :	Q96B23
Mouse Gene Id :	212163
Mouse Swiss Prot No :	Q8BH50
Immunogen :	Synthesized peptide derived from human CR025 AA range: 61-111
Specificity :	This antibody detects endogenous levels of CR025 at Human/Mouse
Formulation :	Liquid in PBS containing 50% glycerol, 0.5% BSA and 0.02% sodium azide.
Source :	Polyclonal, Rabbit,IgG
Dilution :	WB 1:500-2000
Purification :	The antibody was affinity-purified from rabbit antiserum by affinity-chromatography using epitope-specific immunogen.
Concentration :	1 mg/ml
Storage Stability :	-15°C to -25°C/1 year(Do not lower than -25°C)

Molecularweight :	44kD
Function :	PTM:Phosphorylated upon DNA damage, probably by ATM or ATR.,
Sort :	4529
No4 :	1
Host :	Rabbit
Modifications :	Unmodified

Products Images



Western blot analysis of lysates from 3T3 cells, primary antibody was diluted at 1:1000, 4 ° over night