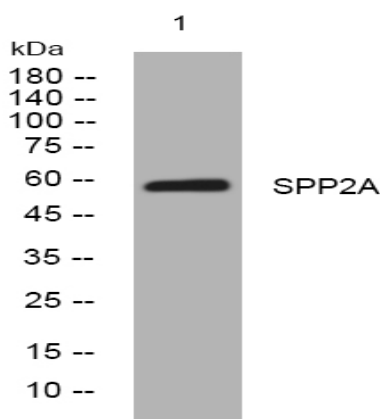


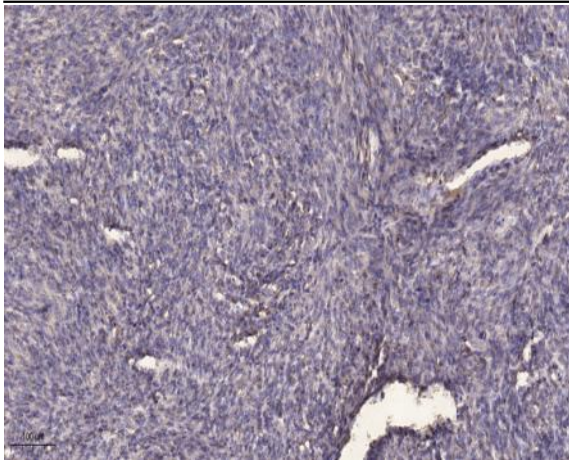
SPP2A rabbit pAb

Catalog No :	YT7468
Reactivity :	Human;Mouse
Applications :	WB;IHC
Target :	SPP2A
Gene Name :	SPPL2A IMP3 PSL2 PSEC0147
Protein Name :	SPP2A
Human Gene Id :	84888
Human Swiss Prot No :	Q8TCT8
Mouse Gene Id :	66552
Mouse Swiss Prot No :	Q9JJF9
Immunogen :	Synthesized peptide derived from human SPP2A AA range: 66-116
Specificity :	This antibody detects endogenous levels of SPP2A at Human/Mouse
Formulation :	Liquid in PBS containing 50% glycerol, 0.5% BSA and 0.02% sodium azide.
Source :	Polyclonal, Rabbit,IgG
Dilution :	WB 1:500-2000;IHC 1:50-300
Purification :	The antibody was affinity-purified from rabbit antiserum by affinity-chromatography using epitope-specific immunogen.
Concentration :	1 mg/ml
Storage Stability :	-15°C to -25°C/1 year(Do not lower than -25°C)

Molecularweight : 57kD**Background :** This gene encodes a member of the GXGD family of aspartic proteases, which are transmembrane proteins with two conserved catalytic motifs localized within the membrane-spanning regions, as well as a member of the signal peptide peptidase-like protease (SPPL) family. This protein is expressed in all major adult human tissues and localizes to late endosomal compartments and lysosomal membranes. A pseudogene of this gene also lies on chromosome 15. [provided by RefSeq, Feb 2012],**Function :** function:Functions as an intramembrane protease. Functions in ITM2B processing.,similarity:Belongs to the peptidase A22B family.,similarity:Contains 1 PA (protease associated) domain.,subunit:Interacts with ITM2B.,**Subcellular Location :** Late endosome membrane ; Multi-pass membrane protein . Lysosome membrane ; Multi-pass membrane protein . Membrane ; Multi-pass membrane protein ; Luminal side . Colocalizes with palmitoylated and myristoylated proteins at the plasma membrane.**Expression :** Ubiquitous.**Sort :** 16559**No4 :** 1**Host :** Rabbit**Modifications :** Unmodified

Products Images





Immunohistochemical analysis of paraffin-embedded human Colon cancer. 1, Antibody was diluted at 1:200(4° overnight). 2, Tris-EDTA,pH9.0 was used for antigen retrieval. 3,Secondary antibody was diluted at 1:200(room temperature, 45min).