

N4BP2 rabbit pAb

| | |
|------------------------------|---|
| Catalog No : | YT7466 |
| Reactivity : | Human |
| Applications : | WB;ELISA;IHC |
| Target : | N4BP2 |
| Gene Name : | N4BP2 B3BP KIAA1413 |
| Protein Name : | N4BP2 |
| Human Gene Id : | 55728 |
| Human Swiss Prot No : | Q86UW6 |
| Immunogen : | Synthesized peptide derived from human N4BP2 AA range: 256-306 |
| Specificity : | This antibody detects endogenous levels of N4BP2 at Human |
| Formulation : | Liquid in PBS containing 50% glycerol, 0.5% BSA and 0.02% sodium azide. |
| Source : | Polyclonal, Rabbit,IgG |
| Dilution : | WB 1:500-2000;IHC 1:50-300; ELISA 2000-20000 |
| Purification : | The antibody was affinity-purified from rabbit antiserum by affinity-chromatography using epitope-specific immunogen. |
| Concentration : | 1 mg/ml |
| Storage Stability : | -15 °C to -25 °C/1 year(Do not lower than -25 °C) |
| Molecularweight : | 195kD |
| Background : | This gene encodes a protein containing a polynucleotide kinase domain (PNK) near the N-terminal region, and a Small MutS Related (Smr) domain near the C-terminal region. The encoded protein can bind to both B-cell leukemia/lymphoma |

3 (BCL-3) and neural precursor cell expressed, developmentally downregulated 4, (Nedd4) proteins. This protein binds and hydrolyzes ATP, may function as a 5'-polynucleotide kinase, and has the capacity to be a ubiquitylation substrate. This protein may play a role in transcription-coupled DNA repair or genetic recombination. Alternative splicing results in multiple transcript variants encoding different isoforms. [provided by RefSeq, Jan 2016],

Function :

domain:The Smr domain has nicking endonuclease activity, but no significant double strand cleavage or exonuclease activity.,function:Has 5'-polynucleotide kinase and nicking endonuclease activity. May play a role in DNA repair or recombination.,PTM:Ubiquitinated; this targets the protein for degradation by the proteasome.,similarity:Contains 1 CUE domain.,similarity:Contains 1 Smr domain.,subunit:Binds NEDD4 (By similarity). Binds BCL3 and CREBBP.,

Subcellular Location :

Cytoplasm .

Sort :

10532

No4 :

1

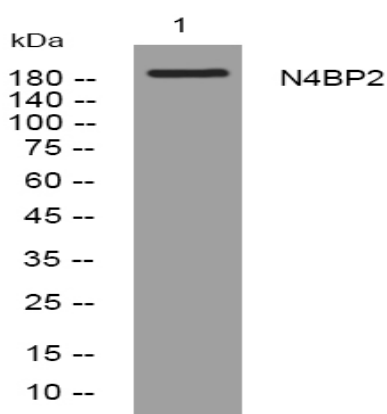
Host :

Rabbit

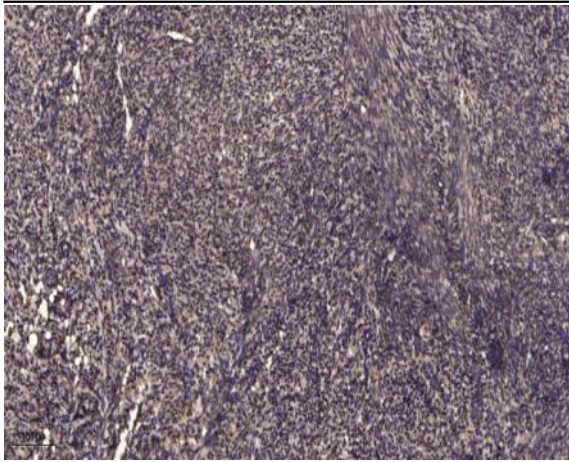
Modifications :

Unmodified

Products Images



Western blot analysis of lysates from HeLa cells, primary antibody was diluted at 1:1000, 4° over night



Immunohistochemical analysis of paraffin-embedded human uterus. 1, Antibody was diluted at 1:200(4° overnight). 2, Tris-EDTA,pH9.0 was used for antigen retrieval. 3,Secondary antibody was diluted at 1:200(room temperature, 45min).