

**P4HA1 rabbit pAb**

<b>Catalog No :</b>	YT7464
<b>Reactivity :</b>	Human;Mouse;Rat
<b>Applications :</b>	WB
<b>Target :</b>	P4HA1
<b>Fields :</b>	>>Arginine and proline metabolism;>>Metabolic pathways
<b>Gene Name :</b>	P4HA1 P4HA
<b>Protein Name :</b>	P4HA1
<b>Human Gene Id :</b>	5033
<b>Human Swiss Prot No :</b>	P13674
<b>Mouse Gene Id :</b>	18451
<b>Mouse Swiss Prot No :</b>	Q60715
<b>Rat Gene Id :</b>	64475
<b>Rat Swiss Prot No :</b>	P54001
<b>Immunogen :</b>	Synthesized peptide derived from human P4HA1 AA range: 461-511
<b>Specificity :</b>	This antibody detects endogenous levels of P4HA1 at Human/Mouse/Rat
<b>Formulation :</b>	Liquid in PBS containing 50% glycerol, 0.5% BSA and 0.02% sodium azide.
<b>Source :</b>	Polyclonal, Rabbit,IgG
<b>Dilution :</b>	WB 1[?]500-2000
<b>Purification :</b>	The antibody was affinity-purified from rabbit antiserum by affinity-

---

chromatography using epitope-specific immunogen.

---

**Concentration :** 1 mg/ml

---

**Storage Stability :** -15°C to -25°C/1 year(Do not lower than -25°C)

---

**Molecularweight :** 59kD

---

**Background :** This gene encodes a component of prolyl 4-hydroxylase, a key enzyme in collagen synthesis composed of two identical alpha subunits and two beta subunits. The encoded protein is one of several different types of alpha subunits and provides the major part of the catalytic site of the active enzyme. In collagen and related proteins, prolyl 4-hydroxylase catalyzes the formation of 4-hydroxyproline that is essential to the proper three-dimensional folding of newly synthesized procollagen chains. Alternatively spliced transcript variants encoding different isoforms have been described. [provided by RefSeq, Jul 2008],

---

**Function :** catalytic activity:Procollagen L-proline + 2-oxoglutarate + O(2) = procollagen trans-4-hydroxy-L-proline + succinate + CO(2).,cofactor:Ascorbate.,cofactor:Binds 1 Fe(2+) ion per subunit.,function:Catalyzes the post-translational formation of 4-hydroxyproline in -Xaa-Pro-Gly- sequences in collagens and other proteins.,similarity:Belongs to the P4HA family.,similarity:Contains 1 PKHD (prolyl/lysyl hydroxylase) domain.,similarity:Contains 1 TPR repeat.,subunit:Heterotetramer of two alpha-1 chains and two beta chains (the beta chain is the multi-functional PDI).,

---

**Subcellular Location :** Endoplasmic reticulum lumen.

---

**Expression :** Expressed in the heart, liver, skeletal muscle, kidney, placenta, lung and pancreas.

---

**Tag :** hot

---

**Sort :** 11432

---

**No4 :** 1

---

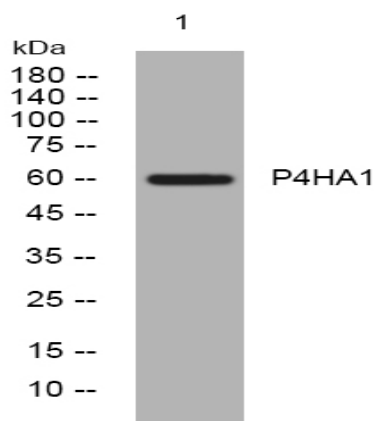
**Host :** Rabbit

---

**Modifications :** Unmodified

---

**Products Images**



Western blot analysis of lysates from VEC cells, primary antibody was diluted at 1:1000, 4° over night