

WFD13 rabbit pAb

Catalog No :	YT7450
Reactivity :	Human;Mouse
Applications :	IHC;IF
Target :	WFD13
Gene Name :	WFDC13 C20orf138 WAP13
Protein Name :	WFD13
Human Gene Id :	164237
Human Swiss Prot No :	Q8IUB5
Mouse Gene Id :	408190
Mouse Swiss Prot No :	Q5DQQ6
Immunogen :	Synthesized peptide derived from human WFD13 AA range: 28-78
Specificity :	This antibody detects endogenous levels of WFD13 at Human/Mouse
Formulation :	Liquid in PBS containing 50% glycerol, 0.5% BSA and 0.02% sodium azide.
Source :	Polyclonal, Rabbit,IgG
Dilution :	IHC 1:50-200. IF 1:50-200
Purification :	The antibody was affinity-purified from rabbit antiserum by affinity-chromatography using epitope-specific immunogen.
Concentration :	1 mg/ml
Storage Stability :	-15°C to -25°C/1 year(Do not lower than -25°C)

Molecularweight : 10kD

Background : This gene encodes a member of the WAP-type four-disulfide core (WFDC) domain family. The WFDC domain, or WAP signature motif, contains eight cysteines forming four disulfide bonds at the core of the protein, and functions as a protease inhibitor. Most WFDC gene members are localized to chromosome 20q12-q13 in two clusters: centromeric and telomeric. This gene belongs to the telomeric cluster. [provided by RefSeq, Jul 2008],

Function : miscellaneous:Although this protein was isolated in a region containing several WAP proteins and was defined as a WAP protein, it does not contain a classical WAP domain.,

Subcellular Location : Secreted .

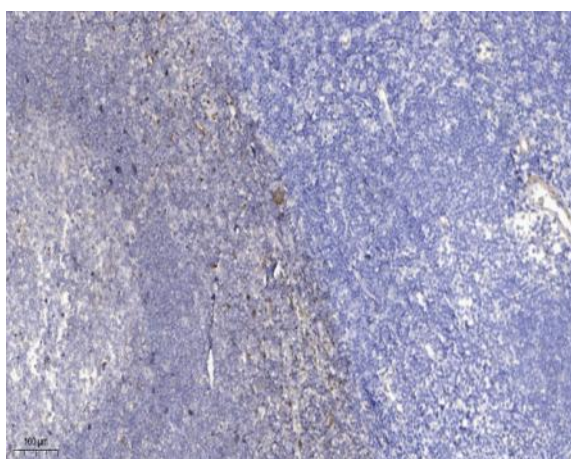
Sort : 24281

No4 : 1

Host : Rabbit

Modifications : Unmodified

Products Images



Immunohistochemical analysis of paraffin-embedded human tonsil. 1, Antibody was diluted at 1:200(4° overnight). 2, Tris-EDTA,pH9.0 was used for antigen retrieval. 3,Secondary antibody was diluted at 1:200(room temperature, 30min).