

## WDR47 rabbit pAb

<b>Catalog No :</b>	YT7459
<b>Reactivity :</b>	Human;Mouse
<b>Applications :</b>	WB
<b>Target :</b>	WDR47
<b>Gene Name :</b>	WDR47 KIAA0893
<b>Protein Name :</b>	WDR47
<b>Human Gene Id :</b>	22911
<b>Human Swiss Prot No :</b>	O94967
<b>Mouse Gene Id :</b>	99512
<b>Mouse Swiss Prot No :</b>	Q8CGF6
<b>Immunogen :</b>	Synthesized peptide derived from human WDR47 AA range: 474-524
<b>Specificity :</b>	This antibody detects endogenous levels of WDR47 at Human/Mouse
<b>Formulation :</b>	Liquid in PBS containing 50% glycerol, 0.5% BSA and 0.02% sodium azide.
<b>Source :</b>	Polyclonal, Rabbit,IgG
<b>Dilution :</b>	WB 1:500-2000
<b>Purification :</b>	The antibody was affinity-purified from rabbit antiserum by affinity-chromatography using epitope-specific immunogen.
<b>Concentration :</b>	1 mg/ml
<b>Storage Stability :</b>	-15°C to -25°C/1 year(Do not lower than -25°C)

**Molecularweight :** 101kD

**Function :** caution:The sequence shown here is derived from an Ensembl automatic analysis pipeline and should be considered as preliminary data.,similarity:Contains 1 CTLH domain.,similarity:Contains 1 LisH domain.,similarity:Contains 7 WD repeats.,

**Subcellular Location :** Cytoplasm, cytoskeleton . Localization along microtubules is mediated by MAP1S. .

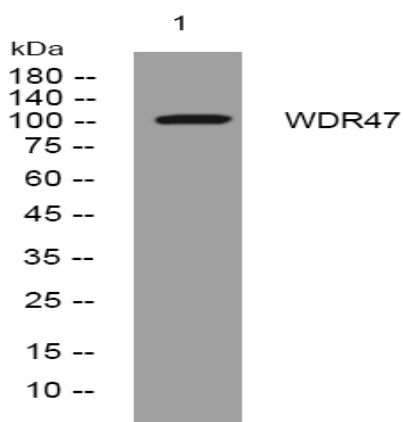
**Sort :** 24259

**No4 :** 1

**Host :** Rabbit

**Modifications :** Unmodified

## Products Images



Western blot analysis of lysates from MCF-7 cells, primary antibody was diluted at 1:1000, 4° over night