

Z658B rabbit pAb

Catalog No :	YT7458
Reactivity :	Human
Applications :	WB
Target :	Z658B
Gene Name :	ZNF658B
Protein Name :	Z658B
Human Swiss Prot No :	Q4V348
Immunogen :	Synthesized peptide derived from human Z658B AA range: 541-591
Specificity :	This antibody detects endogenous levels of Z658B at Human
Formulation :	Liquid in PBS containing 50% glycerol, 0.5% BSA and 0.02% sodium azide.
Source :	Polyclonal, Rabbit,IgG
Dilution :	WB 1[?]500-2000
Purification :	The antibody was affinity-purified from rabbit antiserum by affinity-chromatography using epitope-specific immunogen.
Concentration :	1 mg/ml
Storage Stability :	-15°C to -25°C/1 year(Do not lower than -25°C)
Molecularweight :	90kD
Function :	function:May be involved in transcriptional regulation.,similarity:Belongs to the krueppel C2H2-type zinc-finger protein family.,similarity:Contains 21 C2H2-type zinc fingers.,
Subcellular	Nucleus .

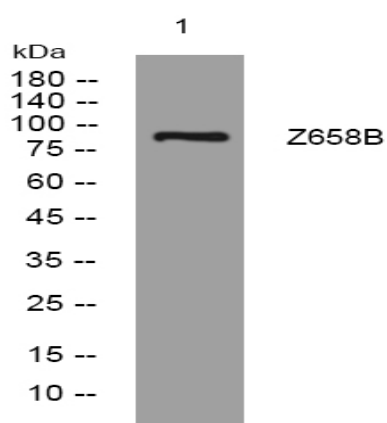
Soctation : 24433

No4 : 1

Host : Rabbit

Modifications : Unmodified

Products Images



Western blot analysis of lysates from SW480 cells, primary antibody was diluted at 1:1000, 4° over night