

FBX22 rabbit pAb

Catalog No :	YT7455
Reactivity :	Human;Mouse
Applications :	WB
Target :	FBX22
Fields :	>>Salmonella infection
Gene Name :	FBXO22 FBX22
Protein Name :	FBX22
Human Gene Id :	26263
Human Swiss Prot No :	Q8NEZ5
Mouse Gene Id :	71999
Mouse Swiss Prot No :	Q78JE5
Immunogen :	Synthesized peptide derived from human FBX22 AA range: 182-232
Specificity :	This antibody detects endogenous levels of FBX22 at Human/Mouse
Formulation :	Liquid in PBS containing 50% glycerol, 0.5% BSA and 0.02% sodium azide.
Source :	Polyclonal, Rabbit,IgG
Dilution :	WB 1[?]500-2000
Purification :	The antibody was affinity-purified from rabbit antiserum by affinity-chromatography using epitope-specific immunogen.
Concentration :	1 mg/ml

Storage Stability : -15°C to -25°C/1 year(Do not lower than -25°C)

Molecularweight : 44kD

Background : This gene encodes a member of the F-box protein family which is characterized by an approximately 40 amino acid motif, the F-box. The F-box proteins constitute one of the four subunits of the ubiquitin protein ligase complex called SCFs (SKP1-cullin-F-box), which function in phosphorylation-dependent ubiquitination. The F-box proteins are divided into 3 classes: Fbws containing WD-40 domains, Fbls containing leucine-rich repeats, and Fbxs containing either different protein-protein interaction modules or no recognizable motifs. The protein encoded by this gene belongs to the Fbxs class and, as a transcriptional target of the tumor protein p53, is thought to be involved in degradation of specific proteins in response to p53 induction. Alternative splicing results in multiple transcript variants. [provided by RefSeq, Dec 2010],

Function : function:Substrate-recognition component of the SCF (SKP1-CUL1-F-box protein)-type E3 ubiquitin ligase complex.,similarity:Contains 1 F-box domain.,subunit:Directly interacts with SKP1A and CUL1.,tissue specificity:Predominantly expressed in liver.,

Subcellular Location : Cytoplasm, myofibril, sarcomere, Z line .

Expression : Predominantly expressed in liver, also enriched in cardiac muscle.

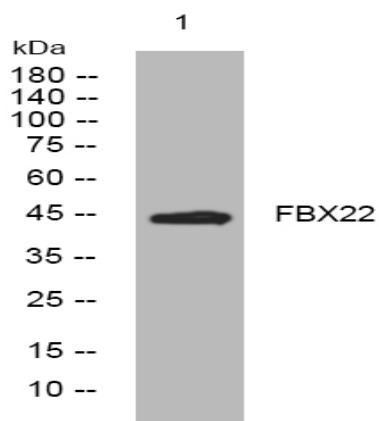
Sort : 5979

No4 : 1

Host : Rabbit

Modifications : Unmodified

Products Images



Western blot analysis of lysates from HpeG2 cells, primary antibody was diluted at 1:1000, 4° over night