

## NOSTN rabbit pAb

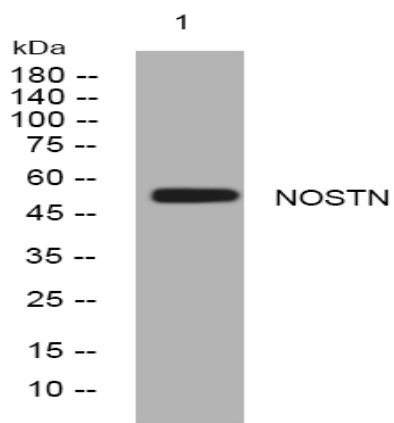
<b>Catalog No :</b>	YT7453
<b>Reactivity :</b>	Human;Mouse;Rat
<b>Applications :</b>	WB
<b>Target :</b>	NOSTN
<b>Gene Name :</b>	NOSTRIN
<b>Protein Name :</b>	NOSTN
<b>Human Gene Id :</b>	115677
<b>Human Swiss Prot No :</b>	Q8IVI9
<b>Mouse Gene Id :</b>	329416
<b>Mouse Swiss Prot No :</b>	Q6WKZ7
<b>Rat Gene Id :</b>	311111
<b>Rat Swiss Prot No :</b>	Q5I0D6
<b>Immunogen :</b>	Synthesized peptide derived from human NOSTN AA range: 309-359
<b>Specificity :</b>	This antibody detects endogenous levels of NOSTN at Human/Mouse/Rat
<b>Formulation :</b>	Liquid in PBS containing 50% glycerol, 0.5% BSA and 0.02% sodium azide.
<b>Source :</b>	Polyclonal, Rabbit,IgG
<b>Dilution :</b>	WB 1:500-2000
<b>Purification :</b>	The antibody was affinity-purified from rabbit antiserum by affinity-chromatography using epitope-specific immunogen.

---

<b>Concentration :</b>	1 mg/ml
<b>Storage Stability :</b>	-15°C to -25°C/1 year(Do not lower than -25°C)
<b>Molecularweight :</b>	56kD
<b>Background :</b>	Nitric oxide (NO) is a potent mediator in biologic processes such as neurotransmission, inflammatory response, and vascular homeostasis. NOSTRIN binds the enzyme responsible for NO production, endothelial NO synthase (ENOS; MIM 163729), and triggers the translocation of ENOS from the plasma membrane to vesicle-like subcellular structures, thereby attenuating ENOS-dependent NO production.[supplied by OMIM, Apr 2004],
<b>Function :</b>	domain:The FCH domain is necessary for membrane targeting.,domain:The SH3 domain mediates interaction with NOS3, DNM2 and WASL.,function:Multivalent adapter protein which may decrease NOS3 activity by inducing its translocation away from the plasma membrane.,similarity:Contains 1 FCH domain.,similarity:Contains 1 SH3 domain.,subcellular location:Enriched in selected actin structures.,subunit:Homotrimer. Interacts with DAB2 (By similarity). Interacts with NOS3, DNM2, WASL and CAV1.,tissue specificity:Expressed at highest levels in heart, kidney, placenta and lung, and at lowest levels in brain, thymus and spleen. Present in vascular endothelial cells and placenta. Over-expressed in placenta from women with pre-eclampsia (at protein level).,
<b>Subcellular Location :</b>	[Isoform 1]: Cell membrane ; Peripheral membrane protein ; Cytoplasmic side . Cytoplasmic vesicle . Cytoplasm, cytoskeleton . Enriched in selected actin structures (PubMed:16234328, PubMed:16376344).; [Isoform 3]: Nucleus .
<b>Expression :</b>	Expressed at highest levels in heart, kidney, placenta and lung, and at lowest levels in brain, thymus and spleen. Present in vascular endothelial cells and placenta. Over-expressed in placenta from women with pre-eclampsia (at protein level).
<b>Sort :</b>	10928
<b>No4 :</b>	1
<b>Host :</b>	Rabbit
<b>Modifications :</b>	Unmodified

---

## Products Images



Western blot analysis of lysates from MDA-MB cells, primary antibody was diluted at 1:1000, 4° over night