

AP4B1 rabbit pAb

| | |
|------------------------------|---|
| Catalog No : | YT7451 |
| Reactivity : | Human;Mouse |
| Applications : | WB |
| Target : | AP4B1 |
| Fields : | >>Lysosome |
| Gene Name : | AP4B1 |
| Protein Name : | AP4B1 |
| Human Gene Id : | 10717 |
| Human Swiss Prot No : | Q9Y6B7 |
| Mouse Gene Id : | 67489 |
| Mouse Swiss Prot No : | Q9WV76 |
| Immunogen : | Synthesized peptide derived from human AP4B1 AA range: 595-645 |
| Specificity : | This antibody detects endogenous levels of AP4B1 at Human/Mouse |
| Formulation : | Liquid in PBS containing 50% glycerol, 0.5% BSA and 0.02% sodium azide. |
| Source : | Polyclonal, Rabbit,IgG |
| Dilution : | WB 1[?]500-2000 |
| Purification : | The antibody was affinity-purified from rabbit antiserum by affinity-chromatography using epitope-specific immunogen. |
| Concentration : | 1 mg/ml |

Storage Stability : -15°C to -25°C/1 year(Do not lower than -25°C)

Molecularweight : 81kD

Background : This gene encodes a subunit of a heterotetrameric adapter-like complex 4 that is involved in targeting proteins from the trans-Golgi network to the endosomal-lysosomal system. Mutations in this gene are associated with cerebral palsy spastic quadriplegic type 5 (CPSQ5) disorder. Alternatively spliced transcript variants encoding different isoforms have been found for this gene. [provided by RefSeq, Dec 2011],

Function : function:Subunit of novel type of clathrin- or non-clathrin-associated protein coat involved in targeting proteins from the trans-Golgi network (TGN) to the endosomal-lysosomal system.,similarity:Belongs to the adaptor complexes large subunit family.,subcellular location:Associated with the trans-Golgi network. Found in soma and dendritic shafts of neuronal cells.,subunit:Adaptor-like complex 4 (AP-4) is a heterotetramer composed of two large adaptins (epsilon-type subunit AP4E1 and beta-type subunit AP4B1), a medium adaptin (mu-type subunit AP4M1) and a small adaptin (sigma-type AP4S1).,tissue specificity:Widely expressed.,

Subcellular Location : Golgi apparatus, trans-Golgi network membrane ; Peripheral membrane protein .

Expression : Widely expressed.

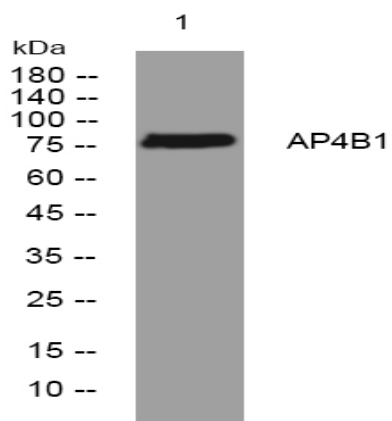
Sort : 2109

No4 : 1

Host : Rabbit

Modifications : Unmodified

Products Images



Western blot analysis of lysates from HEK293 cells, primary antibody was diluted at 1:1000, 4° over night