

## ORAI3 rabbit pAb

<b>Catalog No :</b>	YT7445
<b>Reactivity :</b>	Human;Mouse;Rat
<b>Applications :</b>	WB
<b>Target :</b>	ORAI3
<b>Fields :</b>	>>Calcium signaling pathway
<b>Gene Name :</b>	ORAI3 TMEM142C
<b>Protein Name :</b>	ORAI3
<b>Human Gene Id :</b>	93129
<b>Human Swiss Prot No :</b>	Q9BRQ5
<b>Mouse Gene Id :</b>	269999
<b>Mouse Swiss Prot No :</b>	Q6P8G8
<b>Rat Gene Id :</b>	309000
<b>Rat Swiss Prot No :</b>	Q6AXR8
<b>Immunogen :</b>	Synthesized peptide derived from human ORAI3 AA range: 42-92
<b>Specificity :</b>	This antibody detects endogenous levels of ORAI3 at Human/Mouse/Rat
<b>Formulation :</b>	Liquid in PBS containing 50% glycerol, 0.5% BSA and 0.02% sodium azide.
<b>Source :</b>	Polyclonal, Rabbit,IgG
<b>Dilution :</b>	WB 1[?]500-2000
<b>Purification :</b>	The antibody was affinity-purified from rabbit antiserum by affinity-

chromatography using epitope-specific immunogen.

**Concentration :** 1 mg/ml

**Storage Stability :** -15°C to -25°C/1 year(Do not lower than -25°C)

**Molecularweight :** 32kD

**Function :** function:Key regulator or component of store-operated Ca(2+) channel and transcription factor NFAT nuclear import.,similarity:Belongs to the Orai family.,

**Subcellular Location :** Cell membrane ; Multi-pass membrane protein .

**Expression :** Expressed in both naive and effector T helper cells with higher levels in effector cells.

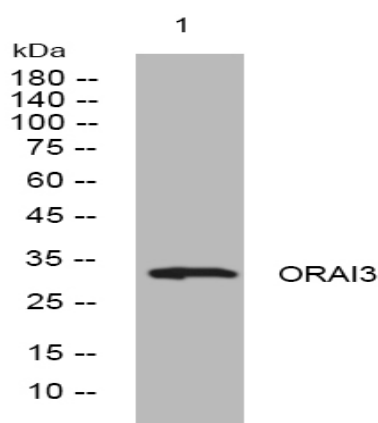
**Sort :** 11313

**No4 :** 1

**Host :** Rabbit

**Modifications :** Unmodified

## Products Images



Western blot analysis of lysates from KB cells, primary antibody was diluted at 1:1000, 4° over night