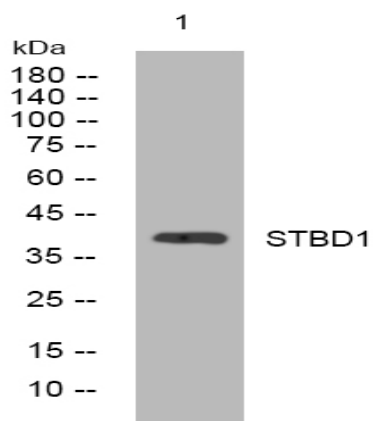


## STBD1 rabbit pAb

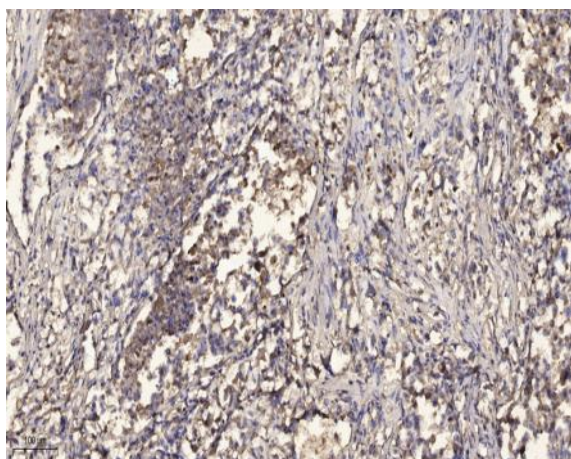
<b>Catalog No :</b>	YT7444
<b>Reactivity :</b>	Human;Mouse;Rat
<b>Applications :</b>	WB;ELISA;IHC
<b>Target :</b>	STBD1
<b>Gene Name :</b>	STBD1 GENX-3414
<b>Protein Name :</b>	STBD1
<b>Human Gene Id :</b>	8987
<b>Human Swiss Prot No :</b>	O95210
<b>Mouse Gene Id :</b>	52331
<b>Mouse Swiss Prot No :</b>	Q8C7E7
<b>Rat Gene Id :</b>	305234
<b>Rat Swiss Prot No :</b>	Q5FVN1
<b>Immunogen :</b>	Synthesized peptide derived from human STBD1 AA range: 107-157
<b>Specificity :</b>	This antibody detects endogenous levels of STBD1 at Human/Mouse/Rat
<b>Formulation :</b>	Liquid in PBS containing 50% glycerol, 0.5% BSA and 0.02% sodium azide.
<b>Source :</b>	Polyclonal, Rabbit,IgG
<b>Dilution :</b>	WB 1:500-2000;IHC 1:50-300; ELISA 2000-20000
<b>Purification :</b>	The antibody was affinity-purified from rabbit antiserum by affinity-chromatography using epitope-specific immunogen.

<b>Concentration :</b>	1 mg/ml
<b>Storage Stability :</b>	-15°C to -25°C/1 year(Do not lower than -25°C)
<b>Molecularweight :</b>	39kD
<b>Function :</b>	similarity:Contains 1 CBM20 (carbohydrate binding type-20) domain.,subcellular location:Distributed in the transverse tubules and/or near the junctional sarcoplasmic reticulum.,tissue specificity:Expressed at high level in skeletal and cardiac muscles. Moderately expressed in liver and placenta. No expression is found in pancreas, kidney or lung. Present in skeletal muscle, heart and placenta (at protein level).,
<b>Subcellular Location :</b>	Preautophagosomal structure membrane ; Single-pass type III membrane protein . Endoplasmic reticulum membrane ; Single-pass type III membrane protein . Cell membrane, sarcolemma, T-tubule . Also detected near the junctional sarcoplasmic reticulum (PubMed:9794794). Concentrates at perinuclear structures (PubMed:21893048)..
<b>Expression :</b>	Expressed at high level in skeletal and cardiac muscles. Moderately expressed in liver and placenta. No expression is found in pancreas, kidney or lung. Present in skeletal muscle, heart and placenta (at protein level).
<b>Sort :</b>	16740
<b>No4 :</b>	1
<b>Host :</b>	Rabbit
<b>Modifications :</b>	Unmodified

## Products Images



Western blot analysis of lysates from MCF-7 cells, primary antibody was diluted at 1:1000, 4° over night



Immunohistochemical analysis of paraffin-embedded human Squamous cell carcinoma of lung. 1, Antibody was diluted at 1:200(4° overnight). 2, Tris-EDTA,pH9.0 was used for antigen retrieval. 3,Secondary antibody was diluted at 1:200(room temperature, 45min).