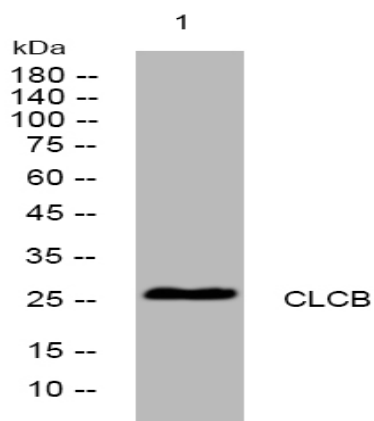


CLCB rabbit pAb

| | |
|------------------------------|---|
| Catalog No : | YT7442 |
| Reactivity : | Human;Mouse;Rat |
| Applications : | WB |
| Target : | CLCB |
| Fields : | >>Lysosome;>>Endocytosis;>>Synaptic vesicle cycle;>>Endocrine and other factor-regulated calcium reabsorption;>>Huntington disease;>>Bacterial invasion of epithelial cells |
| Gene Name : | CLTB |
| Protein Name : | CLCB |
| Human Gene Id : | 1212 |
| Human Swiss Prot No : | P09497 |
| Mouse Gene Id : | 74325 |
| Mouse Swiss Prot No : | Q6IRU5 |
| Rat Gene Id : | 116561 |
| Rat Swiss Prot No : | P08082 |
| Immunogen : | Synthesized peptide derived from human CLCB AA range: 168-218 |
| Specificity : | This antibody detects endogenous levels of CLCB at Human/Mouse/Rat |
| Formulation : | Liquid in PBS containing 50% glycerol, 0.5% BSA and 0.02% sodium azide. |
| Source : | Polyclonal, Rabbit,IgG |
| Dilution : | WB 1:500-2000 |

| | |
|-------------------------------|--|
| Purification : | The antibody was affinity-purified from rabbit antiserum by affinity-chromatography using epitope-specific immunogen. |
| Concentration : | 1 mg/ml |
| Storage Stability : | -15°C to -25°C/1 year(Do not lower than -25°C) |
| Molecularweight : | 25kD |
| Background : | Clathrin is a large, soluble protein composed of heavy and light chains. It functions as the main structural component of the lattice-type cytoplasmic face of coated pits and vesicles which entrap specific macromolecules during receptor-mediated endocytosis. This gene encodes one of two clathrin light chain proteins which are believed to function as regulatory elements. Alternative splicing results in multiple transcript variants. [provided by RefSeq, Jul 2008], |
| Function : | function:Clathrin is the major protein of the polyhedral coat of coated pits and vesicles.,subcellular location:Cytoplasmic face of coated pits and vesicles.,subunit:Clathrin coats are formed from molecules containing 3 heavy chains and 3 light chains. Interacts (via N-terminus) with HIP1. Interacts with HIP1R., |
| Subcellular Location : | Cytoplasmic vesicle membrane; Peripheral membrane protein; Cytoplasmic side. Membrane, coated pit; Peripheral membrane protein; Cytoplasmic side. Cytoplasmic face of coated pits and vesicles. |
| Sort : | 4128 |
| No4 : | 1 |
| Host : | Rabbit |
| Modifications : | Unmodified |

Products Images



Western blot analysis of lysates from SW480 cells, primary antibody was diluted at 1:1000, 4° over night