

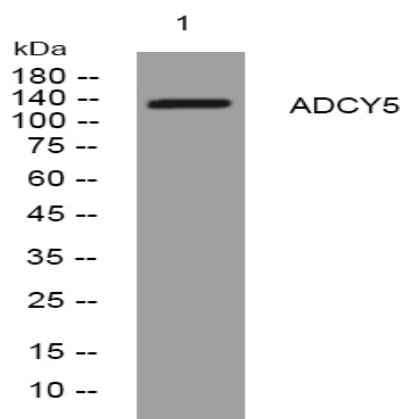
## ADCY5 rabbit pAb

<b>Catalog No :</b>	YT7441
<b>Reactivity :</b>	Human;Mouse;Rat
<b>Applications :</b>	WB
<b>Target :</b>	ADCY5
<b>Fields :</b>	>>Purine metabolism;>>Metabolic pathways;>>Endocrine resistance;>>Rap1 signaling pathway;>>cGMP-PKG signaling pathway;>>cAMP signaling pathway;>>Chemokine signaling pathway;>>Phospholipase D signaling pathway;>>Oocyte meiosis;>>Longevity regulating pathway;>>Longevity regulating pathway - multiple species;>>Adrenergic signaling in cardiomyocytes;>>Vascular smooth muscle contraction;>>Apelin signaling pathway;>>Gap junction;>>Platelet activation;>>Circadian entrainment;>>Thermogenesis;>>Retrograde endocannabinoid signaling;>>Glutamatergic synapse;>>Cholinergic synapse;>>Serotonergic synapse;>>GABAergic synapse;>>Dopaminergic synapse;>>Inflammatory mediator regulation of TRP channels;>>Insulin secretion;>>GnRH signaling pathway;>>Ovarian steroidogenesis;>>Progesterone-mediated oocyte maturation;>>Estrogen signaling pathway;>>Melanogenesis;>>Thyroid hormone synthesis;>>Oxytocin signaling pathway;>>Regulation of lipolysis in adipocytes;>>Renin secretion;>>Aldosterone synthesis and secretio
<b>Gene Name :</b>	ADCY5
<b>Protein Name :</b>	ADCY5
<b>Human Gene Id :</b>	111
<b>Human Swiss Prot No :</b>	O95622
<b>Mouse Gene Id :</b>	224129
<b>Mouse Swiss Prot No :</b>	P84309
<b>Rat Gene Id :</b>	64532
<b>Rat Swiss Prot No :</b>	Q04400

<b>Immunogen :</b>	Synthesized peptide derived from human ADCY5 AA range: 471-521
<b>Specificity :</b>	This antibody detects endogenous levels of ADCY5 at Human/Mouse/Rat
<b>Formulation :</b>	Liquid in PBS containing 50% glycerol, 0.5% BSA and 0.02% sodium azide.
<b>Source :</b>	Polyclonal, Rabbit,IgG
<b>Dilution :</b>	WB 1:500-2000
<b>Purification :</b>	The antibody was affinity-purified from rabbit antiserum by affinity-chromatography using epitope-specific immunogen.
<b>Concentration :</b>	1 mg/ml
<b>Storage Stability :</b>	-15°C to -25°C/1 year(Do not lower than -25°C)
<b>Molecularweight :</b>	139kD
<b>Background :</b>	This gene encodes a member of the membrane-bound adenylyl cyclase enzymes. Adenylyl cyclases mediate G protein-coupled receptor signaling through the synthesis of the second messenger cAMP. Activity of the encoded protein is stimulated by the Gs alpha subunit of G protein-coupled receptors and is inhibited by protein kinase A, calcium and Gi alpha subunits. Single nucleotide polymorphisms in this gene may be associated with low birth weight and type 2 diabetes. Alternatively spliced transcript variants that encode different isoforms have been observed for this gene. [provided by RefSeq, Dec 2010],
<b>Function :</b>	catalytic activity:ATP = 3',5'-cyclic AMP + diphosphate.,cofactor:Binds 2 magnesium ions per subunit.,enzyme regulation:Inhibition by calcium in the submicromolar concentration range.,function:This is a membrane-bound, calcium-inhibitable adenylyl cyclase.,similarity:Belongs to the adenylyl cyclase class-4/guanylyl cyclase family.,similarity:Contains 2 guanylate cyclase domains.,
<b>Subcellular Location :</b>	Cell membrane ; Multi-pass membrane protein. Cell projection, cilium .
<b>Expression :</b>	Detected in pancreas islets (at protein level). Detected in pancreas islets.
<b>Sort :</b>	1744
<b>No4 :</b>	1
<b>Host :</b>	Rabbit

**Modifications :** Unmodified

## Products Images



Western blot analysis of lysates from A431 cells, primary antibody was diluted at 1:1000, 4° over night