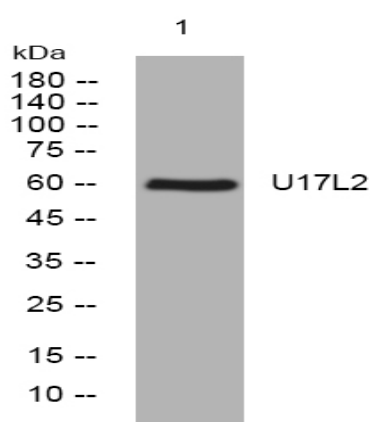


U17L2 rabbit pAb

Catalog No :	YT7439
Reactivity :	Human;Mouse
Applications :	WB
Target :	U17L2
Gene Name :	USP17L2 DUB3
Protein Name :	U17L2
Human Gene Id :	377630
Human Swiss Prot No :	Q6R6M4
Mouse Swiss Prot No :	Q7M764
Immunogen :	Synthesized peptide derived from human U17L2 AA range: 321-371
Specificity :	This antibody detects endogenous levels of U17L2 at Human/Mouse
Formulation :	Liquid in PBS containing 50% glycerol, 0.5% BSA and 0.02% sodium azide.
Source :	Polyclonal, Rabbit,IgG
Dilution :	WB 1:500-2000
Purification :	The antibody was affinity-purified from rabbit antiserum by affinity-chromatography using epitope-specific immunogen.
Concentration :	1 mg/ml
Storage Stability :	-15°C to -25°C/1 year(Do not lower than -25°C)
Molecularweight :	58kD

Background :	DUB3 is a member of the ubiquitin processing protease (UBP) subfamily of deubiquitinating enzymes. See USP1 (MIM 603478) for background information.[supplied by OMIM, Mar 2008],
Function :	catalytic activity:Ubiquitin C-terminal thioester + H(2)O = ubiquitin + a thiol.,caution:The RS447 megasatellite DNA is a highly polymorphic conserved tandem repetitive sequence which contains a copy of USP17. It is present with an interindividual variation in copy number and between 20 to 103 copies can be found both on chromosome 4 and chromosome 8.,caution:The RS447 megasatellite DNA is a highly polymorphic conserved tandem repetitive sequence which contains a copy of USP17. It is present with an interindividual variation in copy number and between 20 to 103 copies can be found in the genome both on chromosome 4 and chromosome 8.,function:Functions in cell apoptosis. Cleaves ubiquitin fusion protein substrates.,function:Functions in cell apoptosis. Cleaves ubiquitin fusion protein substrates. May also bind hyaluronan and RNA.,induction:Up-regulated by interleukin-4 and interleukin-6 (
Subcellular Location :	Nucleus . Endoplasmic reticulum .
Expression :	Broadly expressed.
Sort :	23813
No4 :	1
Host :	Rabbit
Modifications :	Unmodified

Products Images



Western blot analysis of lysates from HeLa cells, primary antibody was diluted at 1:1000, 4° over night