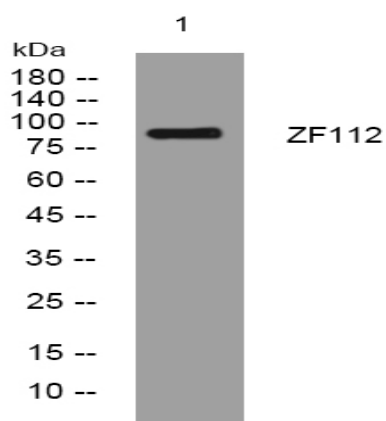


ZF112 rabbit pAb

Catalog No :	YT7433
Reactivity :	Human;Mouse
Applications :	WB
Target :	ZF112
Fields :	>>Herpes simplex virus 1 infection
Gene Name :	ZFP112 ZNF228
Protein Name :	ZF112
Human Gene Id :	7771
Human Swiss Prot No :	Q9UJU3
Mouse Swiss Prot No :	Q0VAW7
Immunogen :	Synthesized peptide derived from human ZF112 AA range: 311-361
Specificity :	This antibody detects endogenous levels of ZF112 at Human/Mouse
Formulation :	Liquid in PBS containing 50% glycerol, 0.5% BSA and 0.02% sodium azide.
Source :	Polyclonal, Rabbit,IgG
Dilution :	WB 1[?]500-2000
Purification :	The antibody was affinity-purified from rabbit antiserum by affinity-chromatography using epitope-specific immunogen.
Concentration :	1 mg/ml
Storage Stability :	-15°C to -25°C/1 year(Do not lower than -25°C)

Molecularweight :	100kD
Function :	function:May be involved in transcriptional regulation.,similarity:Belongs to the krueppel C2H2-type zinc-finger protein family.,similarity:Contains 1 KRAB domain.,similarity:Contains 17 C2H2-type zinc fingers.,
Subcellular Location :	Nucleus .
Sort :	24508
No4 :	1
Host :	Rabbit
Modifications :	Unmodified

Products Images



Western blot analysis of lysates from SH-SY5Y cells, primary antibody was diluted at 1:1000, 4° over night