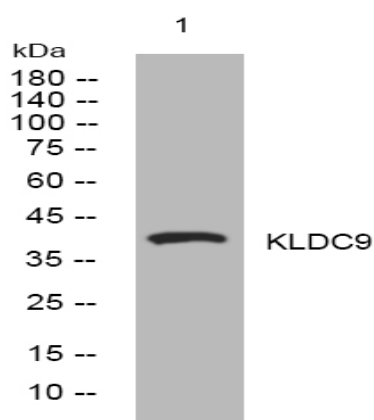


KLDC9 rabbit pAb

Catalog No :	YT7431
Reactivity :	Human;Mouse
Applications :	WB
Target :	KLDC9
Gene Name :	KLHDC9 KARCA1
Protein Name :	KLDC9
Human Gene Id :	126823
Human Swiss Prot No :	Q8NEP7
Mouse Gene Id :	68874
Mouse Swiss Prot No :	Q3USL1
Immunogen :	Synthesized peptide derived from human KLDC9 AA range: 32-82
Specificity :	This antibody detects endogenous levels of KLDC9 at Human/Mouse
Formulation :	Liquid in PBS containing 50% glycerol, 0.5% BSA and 0.02% sodium azide.
Source :	Polyclonal, Rabbit,IgG
Dilution :	WB 1[?]500-2000
Purification :	The antibody was affinity-purified from rabbit antiserum by affinity-chromatography using epitope-specific immunogen.
Concentration :	1 mg/ml
Storage Stability :	-15°C to -25°C/1 year(Do not lower than -25°C)

Molecularweight :	38kD
Function :	similarity:Contains 3 Kelch repeats.,subunit:Interacts with CCNA1.,
Sort :	8945
No4 :	1
Host :	Rabbit
Modifications :	Unmodified

Products Images



Western blot analysis of lysates from MDA-MB cells, primary antibody was diluted at 1:1000, 4° over night