

RLP24 rabbit pAb

Catalog No :	YT7430
Reactivity :	Human;Mouse;Rat
Applications :	WB;IHC
Target :	RLP24
Fields :	>>Ribosome;>>Coronavirus disease - COVID-19
Gene Name :	RSL24D1 C15orf15 RPL24L My024
Protein Name :	RLP24
Human Gene Id :	51187
Human Swiss Prot No :	Q9UHA3
Mouse Gene Id :	225215
Mouse Swiss Prot No :	Q99L28
Rat Gene Id :	363099
Rat Swiss Prot No :	Q6P6G7
Immunogen :	Synthesized peptide derived from human RLP24 AA range: 91-141
Specificity :	This antibody detects endogenous levels of RLP24 at Human/Mouse/Rat
Formulation :	Liquid in PBS containing 50% glycerol, 0.5% BSA and 0.02% sodium azide.
Source :	Polyclonal, Rabbit,IgG
Dilution :	WB 1:500-2000;IHC 1:50-300
Purification :	The antibody was affinity-purified from rabbit antiserum by affinity-

chromatography using epitope-specific immunogen.

Concentration : 1 mg/ml

Storage Stability : -15°C to -25°C/1 year (Do not lower than -25°C)

Molecularweight : 18kD

Background : This gene encodes a protein sharing a low level of sequence similarity with human ribosomal protein L24. Although this gene has been referred to as RPL24, L30, and 60S ribosomal protein L30 isolog in the sequence databases, it is distinct from the human genes officially named RPL24 (which itself has been referred to as ribosomal protein L30) and RPL30. The protein encoded by this gene localizes to the nucleolus and is thought to play a role in the biogenesis of the 60S ribosomal subunit. The precise function of this gene is currently unknown. This gene utilizes alternative polyadenylation signals and has multiple pseudogenes. [provided by RefSeq, Jul 2012],

Function : function:Involved in the biogenesis of the 60S ribosomal subunit. Ensures the docking of GTPBP4/NOG1 to pre-60S particles.,similarity:Belongs to the ribosomal protein L24e family.,subunit:Associated with nucleolar and cytoplasmic pre-60S particles. At the end of biogenesis it dissociates from cytoplasmic pre-60S particles and is likely to be exchanged for its ribosomal homolog, RPL24.,

Subcellular Location : Nucleus, nucleolus .

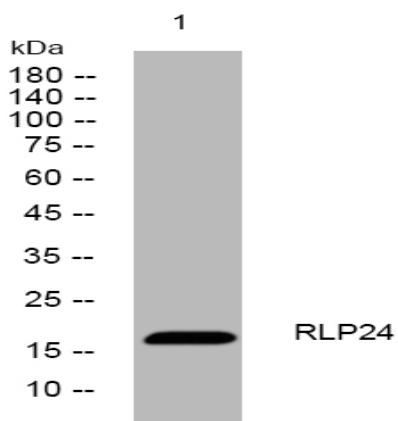
Sort : 14539

No4 : 1

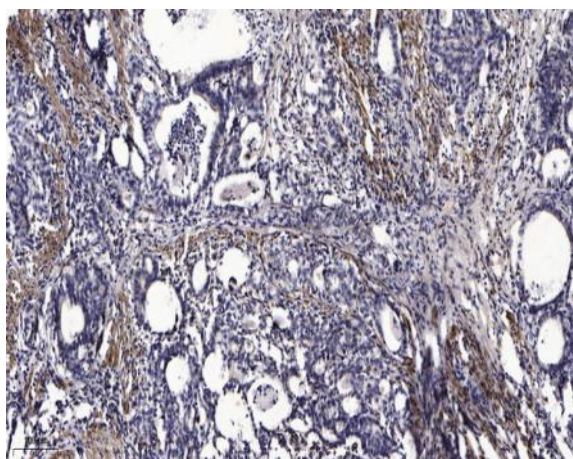
Host : Rabbit

Modifications : Unmodified

Products Images



Western blot analysis of lysates from 293T cells, primary antibody was diluted at 1:1000, 4° over night



Immunohistochemical analysis of paraffin-embedded human Gastric adenocarcinoma. 1, Antibody was diluted at 1:200(4° overnight). 2, Tris-EDTA,pH9.0 was used for antigen retrieval. 3,Secondary antibody was diluted at 1:200(room temperature, 45min).