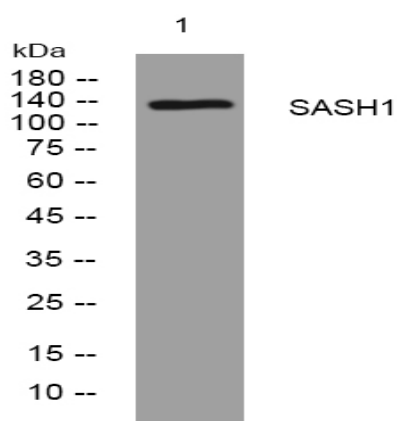


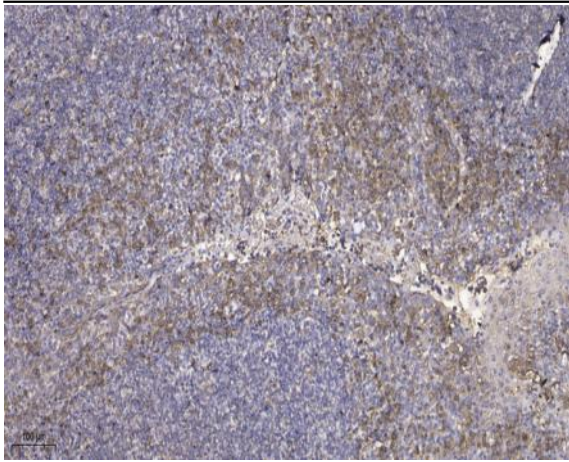
SASH1 rabbit pAb

Catalog No :	YT7427
Reactivity :	Human;Mouse
Applications :	WB;IHC
Target :	SASH1
Gene Name :	SASH1 KIAA0790 PEPE1
Protein Name :	SASH1
Human Gene Id :	23328
Human Swiss Prot No :	O94885
Mouse Gene Id :	70097
Mouse Swiss Prot No :	P59808
Immunogen :	Synthesized peptide derived from human SASH1 AA range: 373-423
Specificity :	This antibody detects endogenous levels of SASH1 at Human/Mouse
Formulation :	Liquid in PBS containing 50% glycerol, 0.5% BSA and 0.02% sodium azide.
Source :	Polyclonal, Rabbit,IgG
Dilution :	WB 1:500-2000;IHC 1:50-300
Purification :	The antibody was affinity-purified from rabbit antiserum by affinity-chromatography using epitope-specific immunogen.
Concentration :	1 mg/ml
Storage Stability :	-15°C to -25°C/1 year(Do not lower than -25°C)

Molecularweight : 137kD**Function :** function:May have a role in a signaling pathway. Could act as a tumor suppressor.,similarity:Contains 1 SH3 domain.,similarity:Contains 2 SAM (sterile alpha motif) domains.,tissue specificity:Expressed ubiquitously, with highest levels in lung, placenta, spleen and thymus. Down-regulated in the majority (74%) of breast tumors in comparison with corresponding normal breast epithelial tissues.,**Subcellular Location :** Cytoplasm .**Expression :** Expressed ubiquitously, with highest levels in lung, placenta, spleen and thymus. Down-regulated in the majority (74%) of breast tumors in comparison with corresponding normal breast epithelial tissues. Expressed in the epidermis, epidermal keratinocytes, dermal fibroblasts and melanocytes (PubMed:23333244, PubMed:26203640).**Sort :** 14777**No4 :** 1**Host :** Rabbit**Modifications :** Unmodified

Products Images





Immunohistochemical analysis of paraffin-embedded human tonsil. 1, Antibody was diluted at 1:200(4° overnight). 2, Tris-EDTA,pH9.0 was used for antigen retrieval. 3,Secondary antibody was diluted at 1:200(room temperature, 45min).