

SCND2 rabbit pAb

Catalog No :	YT7426
Reactivity :	Human
Applications :	WB;ELISA;IHC
Target :	SCND2
Gene Name :	SCAND2
Protein Name :	SCND2
Human Swiss Prot No :	Q9GZW5
Immunogen :	Synthesized peptide derived from human SCND2 AA range: 178-228
Specificity :	This antibody detects endogenous levels of SCND2 at Human
Formulation :	Liquid in PBS containing 50% glycerol, 0.5% BSA and 0.02% sodium azide.
Source :	Polyclonal, Rabbit,IgG
Dilution :	WB 1:500-2000;IHC 1:50-300; ELISA 2000-20000
Purification :	The antibody was affinity-purified from rabbit antiserum by affinity-chromatography using epitope-specific immunogen.
Concentration :	1 mg/ml
Storage Stability :	-15°C to -25°C/1 year(Do not lower than -25°C)
Molecularweight :	34kD
Function :	similarity:Contains 1 SCAN box domain.,
Subcellular Location :	Nucleus .

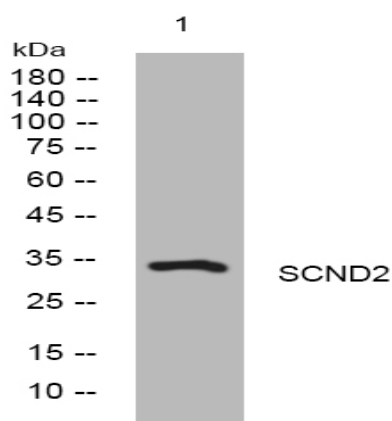
Sort : 16182

No4 : 1

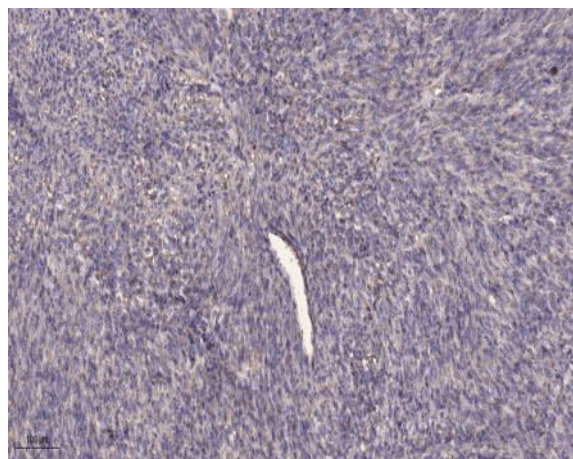
Host : Rabbit

Modifications : Unmodified

Products Images



Western blot analysis of lysates from HeLa cells, primary antibody was diluted at 1:1000, 4° over night



Immunohistochemical analysis of paraffin-embedded human Colon cancer. 1, Antibody was diluted at 1:200(4° overnight). 2, Tris-EDTA,pH9.0 was used for antigen retrieval. 3,Secondary antibody was diluted at 1:200(room temperature, 45min).