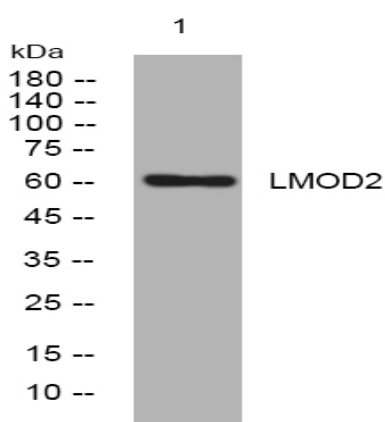


LMOD2 rabbit pAb

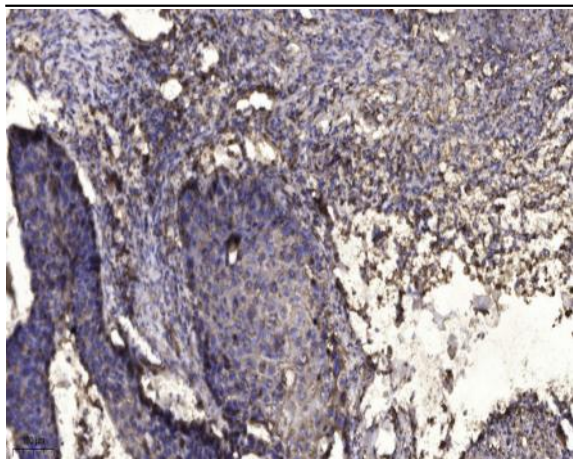
Catalog No :	YT7425
Reactivity :	Human;Mouse;Rat
Applications :	WB;ELISA;IHC
Target :	LMOD2
Gene Name :	LMOD2
Protein Name :	LMOD2
Human Gene Id :	442721
Human Swiss Prot No :	Q6P5Q4
Mouse Gene Id :	93677
Mouse Swiss Prot No :	Q3UHZ5
Rat Gene Id :	296935
Rat Swiss Prot No :	A1A5Q0
Immunogen :	Synthesized peptide derived from human LMOD2 AA range: 279-329
Specificity :	This antibody detects endogenous levels of LMOD2 at Human/Mouse/Rat
Formulation :	Liquid in PBS containing 50% glycerol, 0.5% BSA and 0.02% sodium azide.
Source :	Polyclonal, Rabbit,IgG
Dilution :	WB 1:500-2000;IHC 1:50-300; ELISA 2000-20000
Purification :	The antibody was affinity-purified from rabbit antiserum by affinity-chromatography using epitope-specific immunogen.

Concentration :	1 mg/ml
Storage Stability :	-15°C to -25°C/1 year(Do not lower than -25°C)
Molecularweight :	60kD
Function :	function:May block the elongation and depolymerization of the actin filaments at the pointed end.,sequence caution:Translation N-terminally shortened.,similarity:Belongs to the tropomodulin family.,similarity:Contains 1 WH2 domain.,subunit:Able to bind to tropomyosin.,tissue specificity:Specifically expressed in heart and skeletal muscles. Not expressed in other tissues.,
Subcellular Location :	Cytoplasm, myofibril, sarcomere . Cytoplasm, myofibril . Cytoplasm, myofibril, sarcomere, M line . Cytoplasm, cytoskeleton . Colocalizes with actin filaments in sarcomeres. Detected close to the M line. .
Expression :	Specifically expressed in heart and skeletal muscles, with higher levels in heart (at protein level). Not expressed in other tissues.
Sort :	9216
No4 :	1
Host :	Rabbit
Modifications :	Unmodified

Products Images



Western blot analysis of lysates from DU145 cells, primary antibody was diluted at 1:1000, 4° over night



Immunohistochemical analysis of paraffin-embedded human Squamous cell carcinoma of lung. 1, Antibody was diluted at 1:200(4° overnight). 2, Tris-EDTA,pH9.0 was used for antigen retrieval. 3,Secondary antibody was diluted at 1:200(room temperature, 45min).