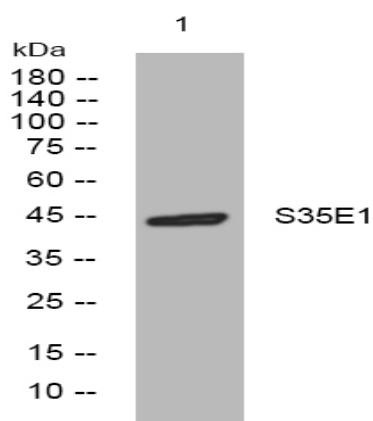


S35E1 rabbit pAb

Catalog No :	YT7423
Reactivity :	Human;Mouse;Rat
Applications :	WB
Target :	S35E1
Gene Name :	SLC35E1 PSEC0038
Protein Name :	S35E1
Human Gene Id :	79939
Human Swiss Prot No :	Q96K37
Mouse Gene Id :	270066
Mouse Swiss Prot No :	Q8CD26
Rat Gene Id :	498599
Rat Swiss Prot No :	P0C6B1
Immunogen :	Synthesized peptide derived from human S35E1 AA range: 257-307
Specificity :	This antibody detects endogenous levels of S35E1 at Human/Mouse/Rat
Formulation :	Liquid in PBS containing 50% glycerol, 0.5% BSA and 0.02% sodium azide.
Source :	Polyclonal, Rabbit,IgG
Dilution :	WB 1:500-2000
Purification :	The antibody was affinity-purified from rabbit antiserum by affinity-chromatography using epitope-specific immunogen.

Concentration :	1 mg/ml
Storage Stability :	-15°C to -25°C/1 year(Do not lower than -25°C)
Molecularweight :	45kD
Function :	function:Putative transporter.,similarity:Belongs to the TPT transporter family. SLC35E subfamily.,
Subcellular Location :	Membrane ; Multi-pass membrane protein .
Sort :	14731
No4 :	1
Host :	Rabbit
Modifications :	Unmodified

Products Images



Western blot analysis of lysates from SH-SY5Y cells, primary antibody was diluted at 1:1000, 4° over night