

AL1L1 rabbit pAb

Catalog No :	YT7420
Reactivity :	Human;Mouse;Rat
Applications :	WB
Target :	AL1L1
Fields :	>>One carbon pool by folate;>>Metabolic pathways
Gene Name :	ALDH1L1 FTHFD
Protein Name :	AL1L1
Human Gene Id :	10840
Human Swiss Prot No :	O75891
Mouse Gene Id :	107747
Mouse Swiss Prot No :	Q8R0Y6
Rat Gene Id :	64392
Rat Swiss Prot No :	P28037
Immunogen :	Synthesized peptide derived from human AL1L1 AA range: 512-562
Specificity :	This antibody detects endogenous levels of AL1L1 at Human/Mouse/Rat
Formulation :	Liquid in PBS containing 50% glycerol, 0.5% BSA and 0.02% sodium azide.
Source :	Polyclonal, Rabbit,IgG
Dilution :	WB 1[?]500-2000
Purification :	The antibody was affinity-purified from rabbit antiserum by affinity-

chromatography using epitope-specific immunogen.

Concentration : 1 mg/ml

Storage Stability : -15°C to -25°C/1 year(Do not lower than -25°C)

Molecularweight : 99kD

Background : The protein encoded by this gene catalyzes the conversion of 10-formyltetrahydrofolate, nicotinamide adenine dinucleotide phosphate (NADP⁺), and water to tetrahydrofolate, NADPH, and carbon dioxide. The encoded protein belongs to the aldehyde dehydrogenase family. Loss of function or expression of this gene is associated with decreased apoptosis, increased cell motility, and cancer progression. There is an antisense transcript that overlaps on the opposite strand with this gene locus. Alternative splicing results in multiple transcript variants. [provided by RefSeq, Jun 2012],

Function : catalytic activity:10-formyltetrahydrofolate + NADP(+) + H(2)O = tetrahydrofolate + CO(2) + NADPH.,similarity:Belongs to the aldehyde dehydrogenase family.,similarity:Contains 1 acyl carrier domain.,similarity:In the C-terminal section; belongs to the aldehyde dehydrogenase family. ALDH1L subfamily.,similarity:In the N-terminal section; belongs to the GART family.,

Subcellular Location : Cytoplasm, cytosol .

Expression : Highly expressed in liver, pancreas and kidney.

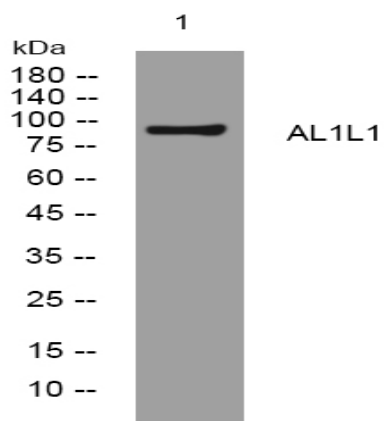
Sort : 1875

No4 : 1

Host : Rabbit

Modifications : Unmodified

Products Images



Western blot analysis of lysates from HpeG2 cells, primary antibody was diluted at 1:1000, 4° over night