

RAB3A rabbit pAb

Catalog No :	YT7418
Reactivity :	Human;Mouse;Rat
Applications :	WB;ELISA;IHC
Target :	RAB3A
Fields :	>>Synaptic vesicle cycle;>>Insulin secretion
Gene Name :	RAB3A
Protein Name :	RAB3A
Human Gene Id :	5864
Human Swiss Prot No :	P20336
Mouse Gene Id :	19339
Mouse Swiss Prot No :	P63011
Rat Gene Id :	25531
Rat Swiss Prot No :	P63012
Immunogen :	Synthesized peptide derived from human RAB3A AA range: 27-77
Specificity :	This antibody detects endogenous levels of RAB3A at Human/Mouse/Rat
Formulation :	Liquid in PBS containing 50% glycerol, 0.5% BSA and 0.02% sodium azide.
Source :	Polyclonal, Rabbit,IgG
Dilution :	WB 1:500-2000;IHC 1:50-300; ELISA 2000-20000
Purification :	The antibody was affinity-purified from rabbit antiserum by affinity-

chromatography using epitope-specific immunogen.

Concentration : 1 mg/ml

Storage Stability : -15°C to -25°C/1 year(Do not lower than -25°C)

Molecularweight : 24kD

Function : function:Involved in exocytosis by regulating a late step in synaptic vesicle fusion. Could play a role in neurotransmitter release by regulating membrane flow in the nerve terminal.,similarity:Belongs to the small GTPase superfamily. Rab family.,subunit:Heterodimer with RIMS2. Part of a ternary complex involving PCLO and EPAC2. Interacts with RPH3A. Interacts with the exocyst complex through SEC15. Binds SYTL4, RIMS1 and RIMS2. Interacts with RAB3IP. Interacts with SGSM1 and SGSM3.,tissue specificity:Specifically expressed in brain.,

Subcellular Location : Cytoplasm, cytosol . Lysosome . Cytoplasmic vesicle, secretory vesicle . Cell projection, axon . Cell membrane ; Lipid-anchor ; Cytoplasmic side . Cell junction, synapse, presynapse . Cell junction, synapse, postsynapse . Cycles between a vesicle-associated GTP-bound form and a cytosolic GDP-bound form. .

Expression : Specifically expressed in brain.

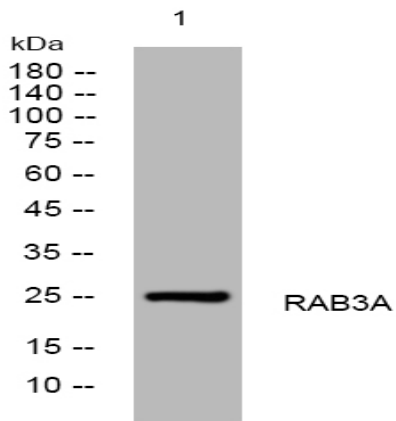
Sort : 13245

No4 : 1

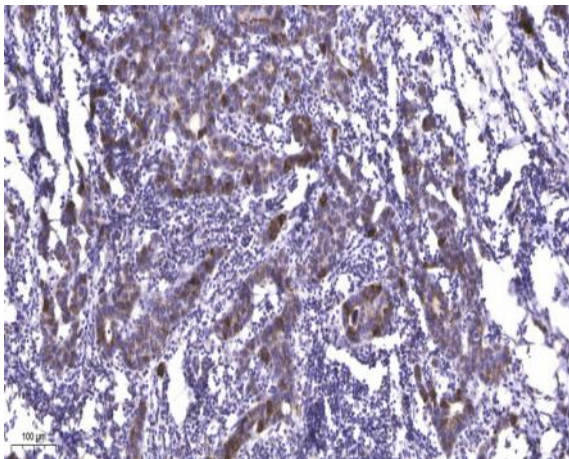
Host : Rabbit

Modifications : Unmodified

Products Images



Western blot analysis of lysates from HpeG2 cells, primary antibody was diluted at 1:1000, 4° over night



Immunohistochemical analysis of paraffin-embedded human Breast cancer. 1, Antibody was diluted at 1:200(4° overnight). 2, Tris-EDTA,pH9.0 was used for antigen retrieval. 3,Secondary antibody was diluted at 1:200(room temperature, 45min).