

## POTEC rabbit pAb

<b>Catalog No :</b>	YT7417
<b>Reactivity :</b>	Human
<b>Applications :</b>	WB
<b>Target :</b>	POTEC
<b>Gene Name :</b>	POTEC A26B2 POTE18
<b>Protein Name :</b>	POTEC
<b>Human Gene Id :</b>	388468
<b>Human Swiss Prot No :</b>	B2RU33
<b>Immunogen :</b>	Synthesized peptide derived from human POTEC AA range: 265-315
<b>Specificity :</b>	This antibody detects endogenous levels of POTEC at Human
<b>Formulation :</b>	Liquid in PBS containing 50% glycerol, 0.5% BSA and 0.02% sodium azide.
<b>Source :</b>	Polyclonal, Rabbit,IgG
<b>Dilution :</b>	WB 1:500-2000
<b>Purification :</b>	The antibody was affinity-purified from rabbit antiserum by affinity-chromatography using epitope-specific immunogen.
<b>Concentration :</b>	1 mg/ml
<b>Storage Stability :</b>	-15°C to -25°C/1 year(Do not lower than -25°C)
<b>Molecularweight :</b>	60kD
<b>Function :</b>	similarity:Belongs to the POTE family.,similarity:Contains 6 ANK repeats.,similarity:Contains 7 ANK repeats.,tissue specificity:Expressed in prostate and testis.,tissue specificity:Expressed in prostate, ovary, testis, placenta

and prostate cancer cell lines. Localizes to basal and terminal prostate epithelial cells.,

**Expression :** Expressed in prostate and testis.

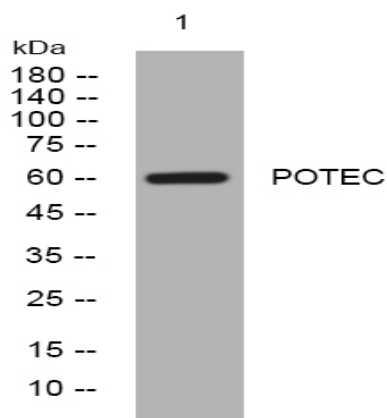
**Sort :** 12912

**No4 :** 1

**Host :** Rabbit

**Modifications :** Unmodified

## Products Images



Western blot analysis of lysates from Hela cells, primary antibody was diluted at 1:1000, 4° over night