

**D106A rabbit pAb**

<b>Catalog No :</b>	YT7415
<b>Reactivity :</b>	Human
<b>Applications :</b>	IHC;IF
<b>Target :</b>	D106A
<b>Gene Name :</b>	DEFB106A BD6 DEFB106 DEFB6; DEFB106B
<b>Protein Name :</b>	D106A
<b>Human Gene Id :</b>	245909
<b>Human Swiss Prot No :</b>	Q8N104
<b>Immunogen :</b>	Synthesized peptide derived from human D106A AA range: 1-51
<b>Specificity :</b>	This antibody detects endogenous levels of D106A at Human
<b>Formulation :</b>	Liquid in PBS containing 50% glycerol, 0.5% BSA and 0.02% sodium azide.
<b>Source :</b>	Polyclonal, Rabbit,IgG
<b>Dilution :</b>	IHC 1:50-200. IF 1:50-200
<b>Purification :</b>	The antibody was affinity-purified from rabbit antiserum by affinity-chromatography using epitope-specific immunogen.
<b>Concentration :</b>	1 mg/ml
<b>Storage Stability :</b>	-15°C to -25°C/1 year(Do not lower than -25°C)
<b>Molecularweight :</b>	7kD
<b>Background :</b>	Defensins form a family of antimicrobial and cytotoxic peptides made by neutrophils. Defensins are short, processed peptide molecules that are classified by structure into three groups: alpha-defensins, beta-defensins and theta-

defensins. All beta-defensin genes are densely clustered in four to five syntenic chromosomal regions. Chromosome 8p23 contains at least two copies of the duplicated beta-defensin cluster. This duplication results in two identical copies of defensin, beta 106, DEFB106A and DEFB106B, in head-to-head orientation. This gene, DEFB106A, represents the more centromeric copy. [provided by RefSeq, Oct 2014],

---

**Function :** function:Has antibacterial activity.,similarity:Belongs to the beta-defensin family.,tissue specificity:Expressed specifically in epididymis and lung.,

---

**Subcellular Location :** Secreted . Membrane . Associates with tumor cell membrane-derived microvesicles (PubMed:23938203) .

---

**Expression :** Expressed specifically in epididymis and lung.

---

**Sort :** 4969

---

**No4 :** 1

---

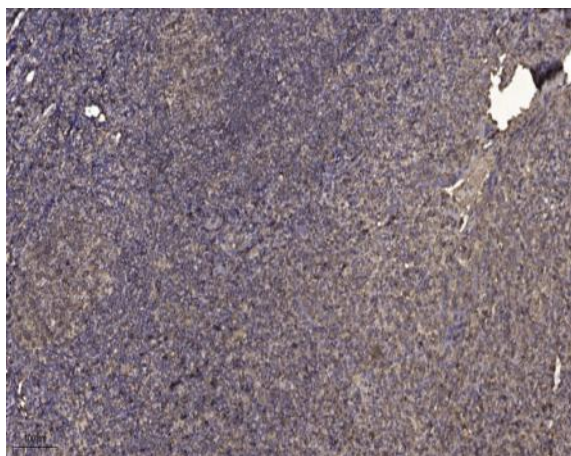
**Host :** Rabbit

---

**Modifications :** Unmodified

---

## Products Images



Immunohistochemical analysis of paraffin-embedded human tonsil. 1, Antibody was diluted at 1:200(4° overnight). 2, Tris-EDTA,pH9.0 was used for antigen retrieval. 3,Secondary antibody was diluted at 1:200(room temperature, 30min).