

## CC107 rabbit pAb

<b>Catalog No :</b>	YT7414
<b>Reactivity :</b>	Human;Mouse
<b>Applications :</b>	WB
<b>Target :</b>	CC107
<b>Gene Name :</b>	CCDC107 PSEC0222
<b>Protein Name :</b>	CC107
<b>Human Gene Id :</b>	203260
<b>Human Swiss Prot No :</b>	Q8WV48
<b>Mouse Gene Id :</b>	622404
<b>Mouse Swiss Prot No :</b>	Q9DCC3
<b>Immunogen :</b>	Synthesized peptide derived from human CC107 AA range: 133-183
<b>Specificity :</b>	This antibody detects endogenous levels of CC107 at Human/Mouse
<b>Formulation :</b>	Liquid in PBS containing 50% glycerol, 0.5% BSA and 0.02% sodium azide.
<b>Source :</b>	Polyclonal, Rabbit,IgG
<b>Dilution :</b>	WB 1:500-2000
<b>Purification :</b>	The antibody was affinity-purified from rabbit antiserum by affinity-chromatography using epitope-specific immunogen.
<b>Concentration :</b>	1 mg/ml
<b>Storage Stability :</b>	-15°C to -25°C/1 year(Do not lower than -25°C)

**Molecularweight :** 31kD

**Background :** This gene encodes a membrane protein which contains a coiled-coil domain in the central region. Multiple alternatively spliced transcript variants encoding different isoforms have been found for this gene. [provided by RefSeq, Jan 2013],

**Subcellular Location :** Membrane ; Single-pass membrane protein .

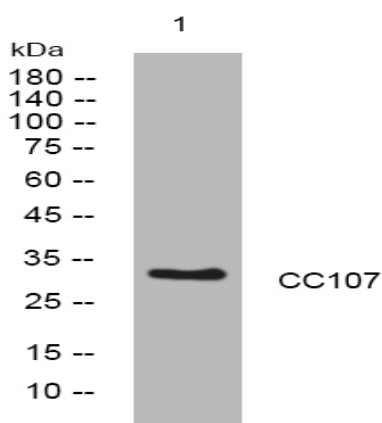
**Sort :** 3294

**No4 :** 1

**Host :** Rabbit

**Modifications :** Unmodified

## Products Images



Western blot analysis of lysates from THP-1 cells, primary antibody was diluted at 1:1000, 4° over night