

EXOC4 rabbit pAb

Catalog No :	YT7413
Reactivity :	Human;Mouse;Rat
Applications :	WB
Target :	EXOC4
Fields :	>>Salmonella infection
Gene Name :	EXOC4 KIAA1699 SEC8 SEC8L1
Protein Name :	EXOC4
Human Gene Id :	60412
Human Swiss Prot No :	Q96A65
Mouse Gene Id :	20336
Mouse Swiss Prot No :	O35382
Rat Gene Id :	116654
Rat Swiss Prot No :	Q62824
Immunogen :	Synthesized peptide derived from human EXOC4 AA range: 512-562
Specificity :	This antibody detects endogenous levels of EXOC4 at Human/Mouse/Rat
Formulation :	Liquid in PBS containing 50% glycerol, 0.5% BSA and 0.02% sodium azide.
Source :	Polyclonal, Rabbit,IgG
Dilution :	WB 1[?]500-2000
Purification :	The antibody was affinity-purified from rabbit antiserum by affinity-

chromatography using epitope-specific immunogen.

Concentration : 1 mg/ml

Storage Stability : -15°C to -25°C/1 year(Do not lower than -25°C)

Molecularweight : 107kD

Background : The protein encoded by this gene is a component of the exocyst complex, a multiple protein complex essential for targeting exocytic vesicles to specific docking sites on the plasma membrane. Though best characterized in yeast, the component proteins and functions of exocyst complex have been demonstrated to be highly conserved in higher eukaryotes. At least eight components of the exocyst complex, including this protein, are found to interact with the actin cytoskeletal remodeling and vesicle transport machinery. The complex is also essential for the biogenesis of epithelial cell surface polarity. Alternate transcriptional splice variants, encoding different isoforms, have been characterized. [provided by RefSeq, Jul 2008],

Function : function:Component of the exocyst complex involved in the docking of exocyst vesicles with fusion sites on the plasma membrane.,similarity:Belongs to the SEC8 family.,subunit:The exocyst complex is composed of EXOC1, EXOC2, EXOC3, EXOC4, EXOC5, EXOC6, EXOC7 and EXOC8.,

Subcellular Location : Midbody, Midbody ring . Cell projection . Colocalizes with CNTRL/centriolin at the midbody ring (PubMed:16213214). Localizes at the leading edge of migrating cells (By similarity). .

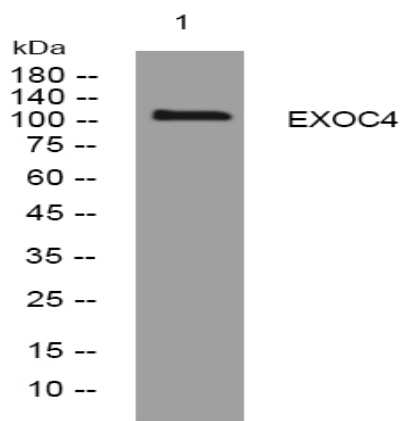
Sort : 5792

No4 : 1

Host : Rabbit

Modifications : Unmodified

Products Images



Western blot analysis of lysates from HuvEc cells, primary antibody was diluted at 1:1000, 4° over night