

## DJC21 rabbit pAb

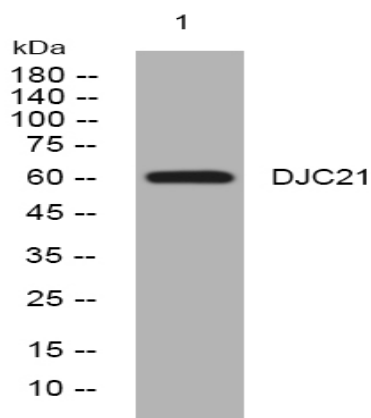
<b>Catalog No :</b>	YT7411
<b>Reactivity :</b>	Human;Mouse
<b>Applications :</b>	WB
<b>Target :</b>	DJC21
<b>Gene Name :</b>	DNAJC21 DNAJA5
<b>Protein Name :</b>	DJC21
<b>Human Gene Id :</b>	134218
<b>Human Swiss Prot No :</b>	Q5F1R6
<b>Immunogen :</b>	Synthesized peptide derived from human DJC21 AA range: 255-305
<b>Specificity :</b>	This antibody detects endogenous levels of DJC21 at Human
<b>Formulation :</b>	Liquid in PBS containing 50% glycerol, 0.5% BSA and 0.02% sodium azide.
<b>Source :</b>	Polyclonal, Rabbit,IgG
<b>Dilution :</b>	WB 1[?]500-2000
<b>Purification :</b>	The antibody was affinity-purified from rabbit antiserum by affinity-chromatography using epitope-specific immunogen.
<b>Concentration :</b>	1 mg/ml
<b>Storage Stability :</b>	-15 °C to -25 °C/1 year(Do not lower than -25 °C)
<b>Molecularweight :</b>	58kD
<b>Function :</b>	function:May act as a co-chaperone for HSP70.,similarity:Contains 1 J domain.,similarity:Contains 2 C2H2-type zinc fingers.,tissue specificity:Brain, placenta, kidney and pancreas.,

---

<b>Subcellular Location :</b>	Cytoplasm . Nucleus . Nucleus, nucleolus . Within the nucleus, localizes primarily to the nucleolus .
<b>Expression :</b>	Expressed in brain, placenta, kidney and pancreas.
<b>Sort :</b>	5147
<b>No4 :</b>	1
<b>Host :</b>	Rabbit
<b>Modifications :</b>	Unmodified

---

## Products Images



Western blot analysis of lysates from KB cells, primary antibody was diluted at 1:1000, 4° over night