

LMCD1 rabbit pAb

Catalog No :	YT7409
Reactivity :	Human;Mouse
Applications :	WB;IHC
Target :	LMCD1
Gene Name :	LMCD1
Protein Name :	LMCD1
Human Gene Id :	29995
Human Swiss Prot No :	Q9NZU5
Mouse Gene Id :	30937
Mouse Swiss Prot No :	Q8VEE1
Immunogen :	Synthesized peptide derived from human LMCD1 AA range: 270-320
Specificity :	This antibody detects endogenous levels of LMCD1 at Human/Mouse
Formulation :	Liquid in PBS containing 50% glycerol, 0.5% BSA and 0.02% sodium azide.
Source :	Polyclonal, Rabbit,IgG
Dilution :	WB 1:500-2000;IHC 1:50-300
Purification :	The antibody was affinity-purified from rabbit antiserum by affinity-chromatography using epitope-specific immunogen.
Concentration :	1 mg/ml
Storage Stability :	-15°C to -25°C/1 year(Do not lower than -25°C)

Molecularweight : 40kD

Background : This gene encodes a member of the LIM-domain family of zinc finger proteins. The encoded protein contains an N-terminal cysteine-rich domain and two C-terminal LIM domains. The presence of LIM domains suggests involvement in protein-protein interactions. The protein may act as a co-regulator of transcription along with other transcription factors. Alternate splicing results in multiple transcript variants of this gene. [provided by RefSeq, May 2013],

Function : similarity:Contains 1 PET domain.,similarity:Contains 2 LIM zinc-binding domains.,subunit:Interacts with beta-dystroglycan.,tissue specificity:Expressed in many tissues with highest abundance in skeletal muscle.,

Subcellular Location : Cytoplasm . Nucleus . May shuttle between the cytoplasm and the nucleus. .

Expression : Expressed in the heart (at protein level). Expressed in many tissues with highest abundance in skeletal muscle.

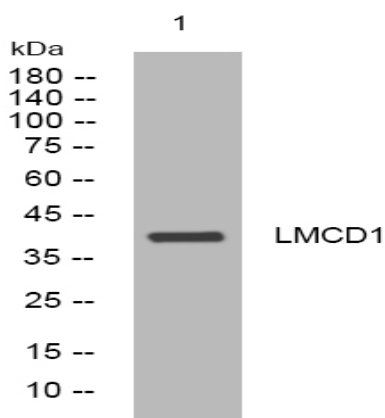
Sort : 9213

No4 : 1

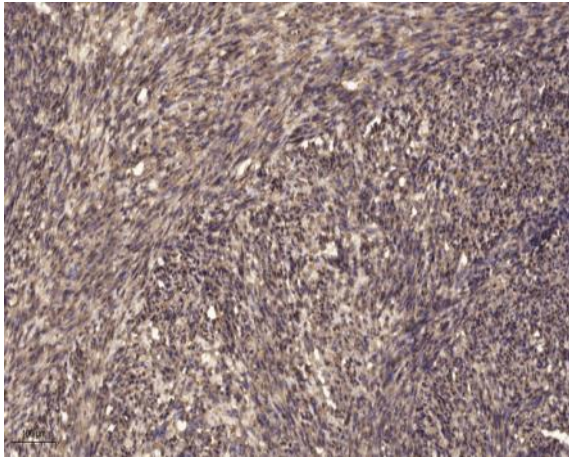
Host : Rabbit

Modifications : Unmodified

Products Images



Western blot analysis of lysates from SW480 cells, primary antibody was diluted at 1:1000, 4° over night



Immunohistochemical analysis of paraffin-embedded human uterus. 1, Antibody was diluted at 1:200(4° overnight). 2, Tris-EDTA,pH9.0 was used for antigen retrieval. 3,Secondary antibody was diluted at 1:200(room temperature, 45min).