

RECQ5 rabbit pAb

Catalog No :	YT7406
Reactivity :	Human;Rat;Mouse;
Applications :	WB;ELISA;IHC
Target :	RECQ5
Gene Name :	RECQL5 RECQ5
Protein Name :	RECQ5
Human Gene Id :	9400
Human Swiss Prot No :	O94762
Immunogen :	Synthesized peptide derived from human RECQ5 AA range: 647-697
Specificity :	This antibody detects endogenous levels of RECQ5 at Human
Formulation :	Liquid in PBS containing 50% glycerol, 0.5% BSA and 0.02% sodium azide.
Source :	Polyclonal, Rabbit,IgG
Dilution :	WB 1:500-2000;IHC 1:50-300; ELISA 2000-20000
Purification :	The antibody was affinity-purified from rabbit antiserum by affinity-chromatography using epitope-specific immunogen.
Concentration :	1 mg/ml
Storage Stability :	-15°C to -25°C/1 year(Do not lower than -25°C)
Molecularweight :	109kD
Background :	The protein encoded by this gene is a helicase that is important for genome stability. The encoded protein also prevents aberrant homologous recombination by displacing RAD51 from ssDNA. Three transcript variants encoding different

isoforms have been found for this gene. [provided by RefSeq, Jul 2011],

Function :

function:May have an important role in DNA metabolism.,similarity:Belongs to the helicase family. RecQ subfamily.,similarity:Contains 1 helicase ATP-binding domain.,similarity:Contains 1 helicase C-terminal domain.,subunit:Interacts with TOP3A and TOP3B.,tissue specificity:Ubiquitous.,

Subcellular Location :

[Isoform Beta]: Nucleus, nucleoplasm . Nucleus . Recruited to sites of DNA damage, such as single-strand breaks and inter-strand cross-links, and at stalled replication forks. Re-localizes from the nucleolus into the nucleus after replicative stress and significantly associates with WRN during S-phase (PubMed:23180761). .; [Isoform Alpha]: Cytoplasm .; [Isoform Gamma]: Cytoplasm .

Expression :

Ubiquitous.

Sort :

14364

No4 :

1

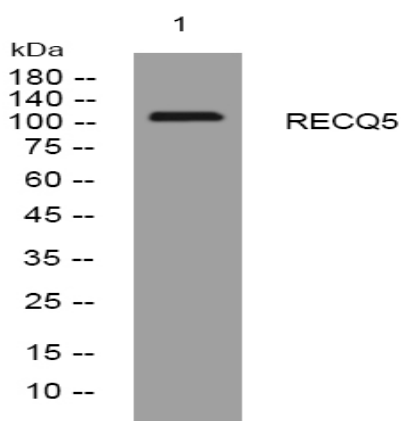
Host :

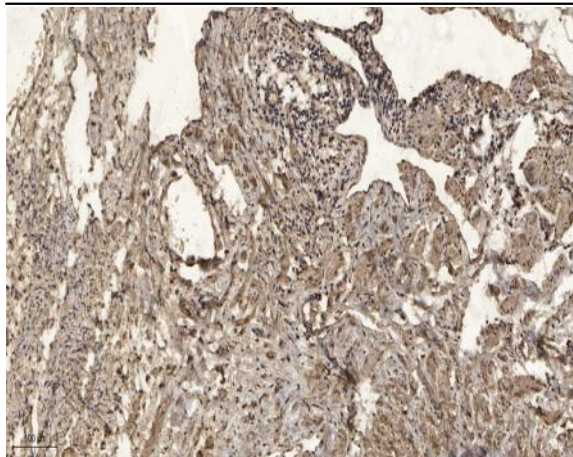
Rabbit

Modifications :

Unmodified

Products Images





Immunohistochemical analysis of paraffin-embedded human oophoroma. 1, Antibody was diluted at 1:200(4° overnight). 2, Tris-EDTA,pH9.0 was used for antigen retrieval. 3,Secondary antibody was diluted at 1:200(room temperature, 45min).