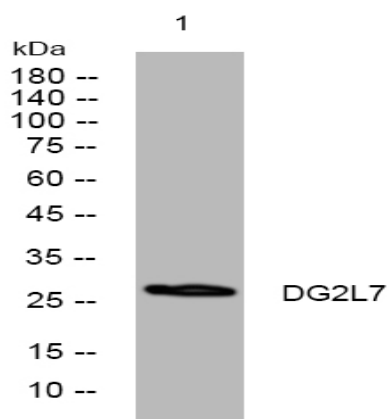


DG2L7 rabbit pAb

Catalog No :	YT7405
Reactivity :	Human;Rat;Mouse;
Applications :	WB
Target :	DG2L7
Gene Name :	DGAT2L7P
Protein Name :	DG2L7
Human Swiss Prot No :	Q6IED9
Immunogen :	Synthesized peptide derived from human DG2L7 AA range: 12-62
Specificity :	This antibody detects endogenous levels of DG2L7 at Human
Formulation :	Liquid in PBS containing 50% glycerol, 0.5% BSA and 0.02% sodium azide.
Source :	Polyclonal, Rabbit,IgG
Dilution :	WB 1[?]500-2000
Purification :	The antibody was affinity-purified from rabbit antiserum by affinity-chromatography using epitope-specific immunogen.
Concentration :	1 mg/ml
Storage Stability :	-15°C to -25°C/1 year(Do not lower than -25°C)
Molecularweight :	27kD
Function :	function:Probable acyltransferase uses fatty acyl-CoA as substrate.,similarity:Belongs to the diacylglycerol acyltransferase family.,
Sort :	5110

No4 :	<u>1</u>
Host :	<u>Rabbit</u>
Modifications :	<u>Unmodified</u>

Products Images



Western blot analysis of lysates from MCF-7 cells, primary antibody was diluted at 1:1000, 4° over night