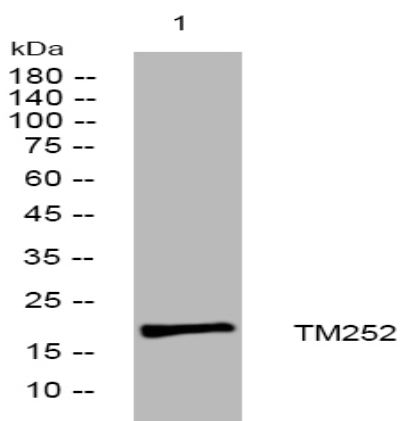


TM252 rabbit pAb

Catalog No :	YT7402
Reactivity :	Human;Mouse;Rat
Applications :	WB
Target :	TM252
Gene Name :	TMEM252 C9orf71
Protein Name :	TM252
Human Gene Id :	169693
Human Swiss Prot No :	Q8N6L7
Mouse Gene Id :	226040
Mouse Swiss Prot No :	Q8C353
Rat Gene Id :	361744
Rat Swiss Prot No :	Q6AXS2
Immunogen :	Synthesized peptide derived from human TM252 AA range: 21-71
Specificity :	This antibody detects endogenous levels of TM252 at Human/Mouse/Rat
Formulation :	Liquid in PBS containing 50% glycerol, 0.5% BSA and 0.02% sodium azide.
Source :	Polyclonal, Rabbit,IgG
Dilution :	WB 1:500-2000
Purification :	The antibody was affinity-purified from rabbit antiserum by affinity-chromatography using epitope-specific immunogen.

Concentration :	1 mg/ml
Storage Stability :	-15°C to -25°C/1 year(Do not lower than -25°C)
Molecularweight :	19kD
Subcellular Location :	Membrane ; Multi-pass membrane protein .
Sort :	17216
No4 :	1
Host :	Rabbit
Modifications :	Unmodified

Products Images



Western blot analysis of lysates from THP-1 cells, primary antibody was diluted at 1:1000, 4° over night