

OR5P2 rabbit pAb

Catalog No :	YT7401
Reactivity :	Human
Applications :	WB
Target :	OR5P2
Fields :	>>Olfactory transduction
Gene Name :	OR5P2
Protein Name :	OR5P2
Human Gene Id :	120065
Human Swiss Prot No :	Q8WZ92
Immunogen :	Synthesized peptide derived from human OR5P2 AA range: 164-214
Specificity :	This antibody detects endogenous levels of OR5P2 at Human
Formulation :	Liquid in PBS containing 50% glycerol, 0.5% BSA and 0.02% sodium azide.
Source :	Polyclonal, Rabbit,IgG
Dilution :	WB 1:500-2000
Purification :	The antibody was affinity-purified from rabbit antiserum by affinity-chromatography using epitope-specific immunogen.
Concentration :	1 mg/ml
Storage Stability :	-15°C to -25°C/1 year(Do not lower than -25°C)
Molecularweight :	35kD

Background : olfactory receptor family 5 subfamily P member 2(OR5P2) Homo sapiens Olfactory receptors interact with odorant molecules in the nose, to initiate a neuronal response that triggers the perception of a smell. The olfactory receptor proteins are members of a large family of G-protein-coupled receptors (GPCR) arising from single coding-exon genes. Olfactory receptors share a 7-transmembrane domain structure with many neurotransmitter and hormone receptors and are responsible for the recognition and G protein-mediated transduction of odorant signals. The olfactory receptor gene family is the largest in the genome. The nomenclature assigned to the olfactory receptor genes and proteins for this organism is independent of other organisms. [provided by RefSeq, Jul 2008],

Function : function:Odorant receptor (Potential). May be involved in taste perception.,miscellaneous:The sequence shown here is derived from an EMBL/GenBank/DDBJ third party annotation (TPA) entry.,similarity:Belongs to the G-protein coupled receptor 1 family.,tissue specificity:Expressed in the tongue.,

Subcellular Location : Cell membrane; Multi-pass membrane protein.

Expression : Expressed in the tongue.

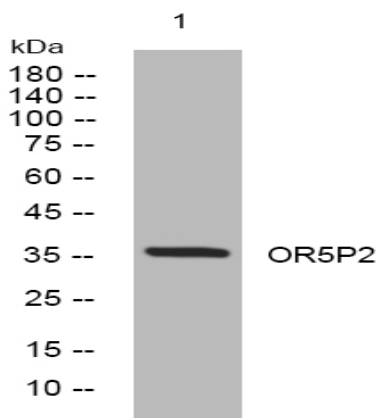
Sort : 11310

No4 : 1

Host : Rabbit

Modifications : Unmodified

Products Images



Western blot analysis of lysates from HeLa cells, primary antibody was diluted at 1:1000, 4 ° over night